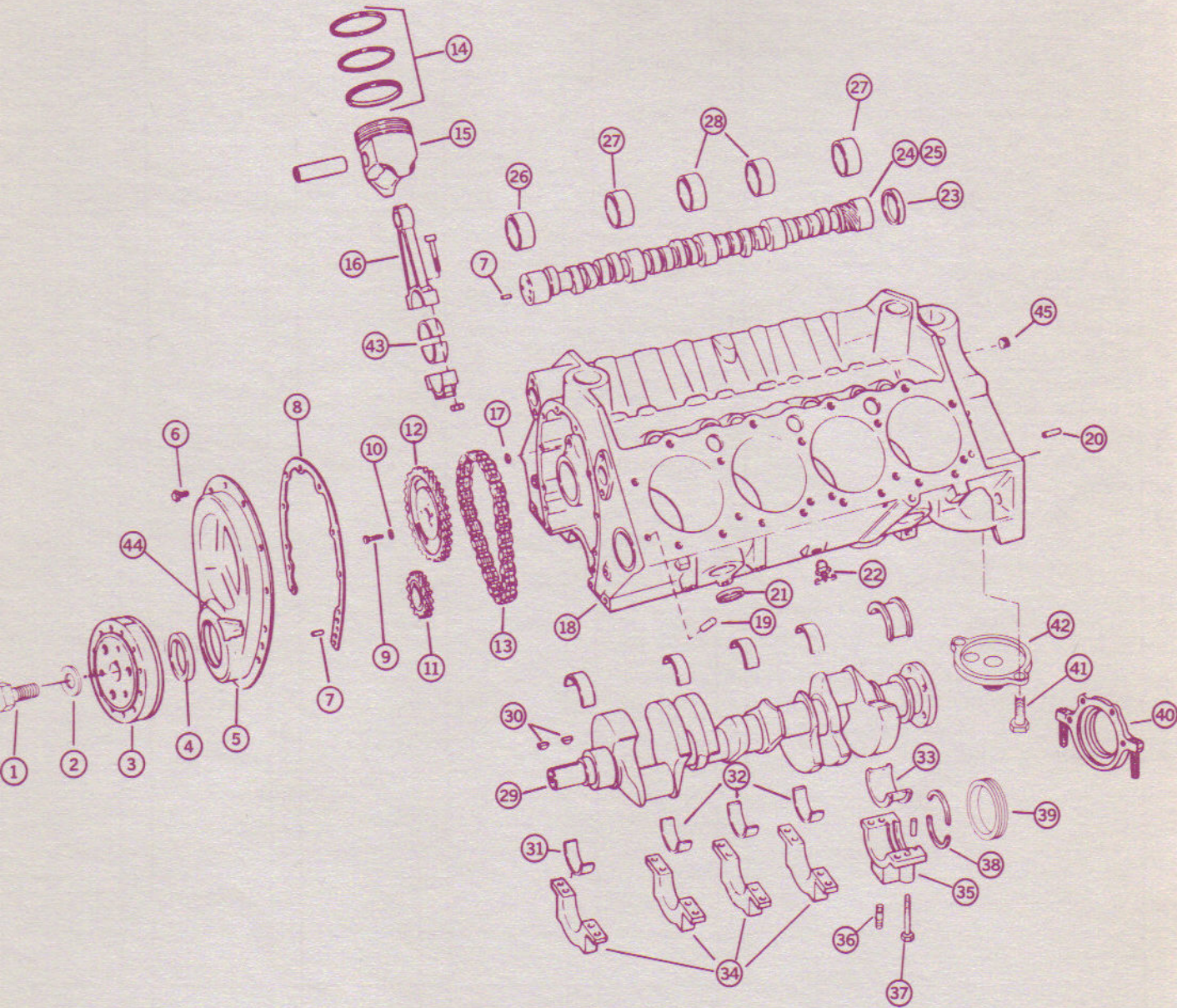


BASIC ENGINE BLOCK GROUP GM

REF. NO.	DESCRIPTION	QTY	262	QTY	350	QTY	350P	QTY	454	QTY	454P
Z	ENGINE - ¾ ASSY - N.R.	1	0009-000		0007-000		0011-000		0003-000		0005-000
Z	ENGINE - ¾ ASSY - R.R.	1	0010-000		0008-000				0004-000		
1	BOLT - TORSIONAL BOLT	1	0009-002		-		-		0003-002		-
2	WASHER - DAMPER BOLT	1	0009-003		-		-		0003-003		-
3	DAMPER ASSY	1	0009-004		0007-004		0011-004		0003-004		0005-004
4	SEAL - CR/SHF - FRT	1	0009-005		0007-005		-		0003-005		-
4	SEAL - CR/SHF - FRT - RR	1	0010-005								
5	COVER - C/C FRT	1	0009-058		-		-		0003-058		-
5	COVER - CC FRT - RR	1	0010-058								
6	SCREW & LOCK ASM - COVER	10	0009-059		-		-		0003-059		-
7	DOWELL PIN	3	0009-057		-		-	4	-		-
8	GASKET - COVER	1	0009-061		-		-		0003-061		-
9	BOLT - CAM/SHF GEAR	3	0009-077		-		-		-		-
10	WASHER - CAM/SHF BOLT	3	0009-078		-		-		-		-
11	GEAR - CR/SHF - N.R.	1	0009-082		0007-082		-		0003-082		0005-082
11	GEAR - CR/SHF - R.R.	1	0010-082		-				0004-082		
12	GEAR - CAM/SHR - N.R.	1	0009-081		0007-081		-		0003-081		0005-081
12	GEAR - CAM/SHF - R.R.	1	0010-081		-				0004-081		
13	CHAIN - TIMING	1	0009-084		0007-084		-		0003-084		0005-084
14	RING GROUP - STANDARD	6	0009-348	8	-		-		0003-348		-
14	RING GROUP - .010 O.S.	6	0009-349	8	-		-		0003-349		-
14	RING GROUP - .030 O.S.	6	0009-350	8	-		-		0003-350		-
15	PISTON & PIN ASSY - STANDARD	6	0009-037	8	0007-037		0011-037		0003-037		0005-037
15	PISTON & PIN ASSY - .010 O.S.	6	0009-338	8	0007-338		0011-338		0003-338		0005-338
15	PISTON & PIN ASSY - .030 O.S.	6	0009-339	8	0007-339		0011-339		0003-339		0005-339
16	CONNECTING ROD ASSY	6	0009-036	8	0007-036		0011-036		0003-036		0005-036
17	PLUG - OIL GALLEY - FRT	3	0009-205		0007-205		-	2	0003-205		-
18	CYLINDER CASE ASSY	1	0009-001		0007-001		0011-001		0003-001		0005-001
19	DOWELL PIN - CYLINDER HD	4	0009-206		-		-		0003-206		-
20	DOWELL PIN - FLYWHEEL HSG	2	0009-207		-		-		-		-
21	PLUG - WATER JACKET - FRZ	8	0009-210		-		-		0003-210		-
22	PLUG - WATER JACKET - DRAIN	2	0000-878		-		-		-		-
23	PLUG - CAM/SHF - REAR	1	0009-208		-		-		0003-208		-
24	CAMSHAFT - N.R.	1	0009-089		0007-089		0011-089		0003-077		0005-077
25	CAMSHAFT - R.R.	1	0010-089		0008-089				0004-089		
26	BEARING - CAM/SHF - #1	1	0009-189		-		-		0003-189		-
27	BEARING - CAM/SHF - #2 & 5	2	0009-190		-		-		0003-190		-
28	BEARING - CAM/SHF - #3 & 4	1	0009-191	2	-		-		0003-191		-
29	CRANKSHAFT	1	0009-021		0007-021		0011-021		0003-021		0005-021
30	KEY - CR/SHF GEAR & DMP	2	0009-209		-		-		-		-
31	BEARING - CR/SHF - #1 - STANDARD	1	0009-505		-		-		0003-505		-
31	BEARING - CR/SHF - #1 - .010 O.S.	1	0009-506		-		-		0003-506		-
31	BEARING - CR/SHF - #1 - .020 O.S.	1	0009-507		-		-		0003-507		-
31	BEARING - CR/SHF - #1 - .030 O.S.	1	0009-508		-		-		0003-508		-
32	BEARING - CR/SHF - #2-3-4 - STANDARD	2	0009-440	3	-		-		0003-440		-
32	BEARING - CR/SHF - #2-3-4 - .010 O.S.	2	0009-441	3	-		-		0003-441		-
32	BEARING - CR/SHF - #2-3-4 - .020 O.S.	2	0009-442	3	-		-		0003-442		-
32	BEARING - CR/SHF - #2-3-4 - .030 O.S.	2	0009-443	3	-		-		0003-443		-
33	BEARING - CR/SHF #5 STANDARD	1	0009-009		-		-		0003-009		-
33	BEARING - CR/SHF #5 .010 O.S.	1	0009-010		-		-		0003-010		-

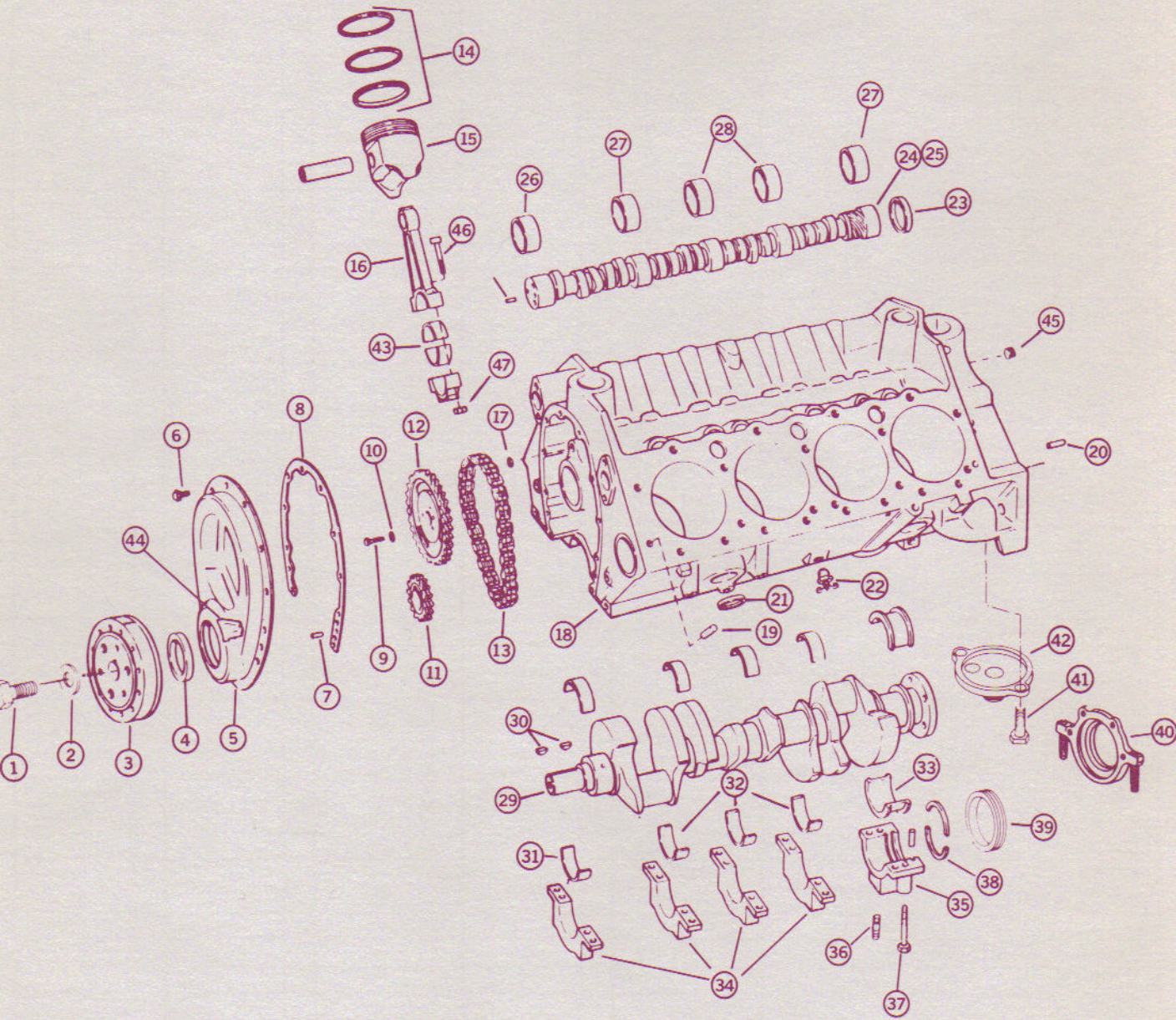
BASIC ENGINE BLOCK GROUP



BASIC ENGINE BLOCK GROUP – 2

REF. NO.	DESCRIPTION	QTY	262	QTY	350	QTY	350P	QTY	454	QTY	454P
33	BEARING – CR/SHF #5 .020 O.S.	1	0009-011		–		–		0003-011		–
33	BEARING – CR/SHF #5 .030 O.S.	1	0009-012		–		–		0003-012		–
34	CAP ASM – CR/SHF – #1-2-3-4	3	0009-150	4	–		–		0003-150		0005-150
35	CAP ASM – CR/SHF – RR	1	0009-151		–		–		0003-151		0005-151
36	STUD – CR/SHF BEARING CAP			5	0007-152		–	4	0003-152		–
37	BOLT – CR/SHF BEARING CAP	8	0009-153		–		–	6	0003-153		–
37	BOLT – CR/SHF BEARING CAP					6	0011-154			10	0005-154
38	SEAL – CR/SHF – RR – N.R.			2	0007-033				0003-033		–
38	SEAL – CR/SHF – RR – R.R.			2	0008-033				0004-033		–
39	SEAL – CR/SHF – RR – 86 – N.R.	1	0009-033		–		–				–
39	SEAL – CR/SHF – RR – 86 – R.R.	1	0010-033		–						–
40	RETAINER – RR SEAL – 86	1	0009-034		–		–				–
41	BOLT – ADAPTER ASM			2	0000-032		–		–		–
42	ADAPTER ASM	1	0009-042	1	0007-042		–		–		–
43	BEARING – CONN ROD – STANDARD	12	0009-038		0007-038		–		0003-038		–
43	BEARING – CONN ROD – .10 O.S.	Opt	0009-039		0007-039		–		0003-039		–
43	BEARING – CONN ROD – .20 O.S.	Opt	0009-040		0007-040		–		0003-040		–
43	BEARING – CONN ROD – .30 O.S.	Opt	0009-041		0007-041		–		0003-041		–
44	POINTER – TIMING – N.R.	1	0009-045		–		0011-045		0003-045		–
44	POINTER – TIMING – R.R.	1	0010-045		–				0004-045		–
45	PLUG – OIL GALLEY – Rr	3	0003-205		–		–	2	–		–
46	BOLT – CONNECTING ROD	12	0009-066	16	0007-066		0007-066		0003-066		0005-066
47	NUT – CONNECTING ROD BOLT	12	0009-087	16	–		–		–		0005-067
★	BRACKET – LIFTING – FRT	1	0009-170		0007-170		–		0003-170		–
★	BRACKET – LIFTING – Rr	1	0009-171		–		–		0003-171		–
★	GASKET – CR/SHF Rr SEAL – RETAINER – 86	1	0009-035		–		–				–
★	BRG – CM/SHF THRUST R.R.	1	0010-092					1	0004-092		–
★	SCREW & LW ASM – CM/SHF & GEAR – R.R.	2	0010-093					2	0004-093		–
★	KEY – CM/SHF & GEAR – R.R.	1	0010-094					1	0004-094		–

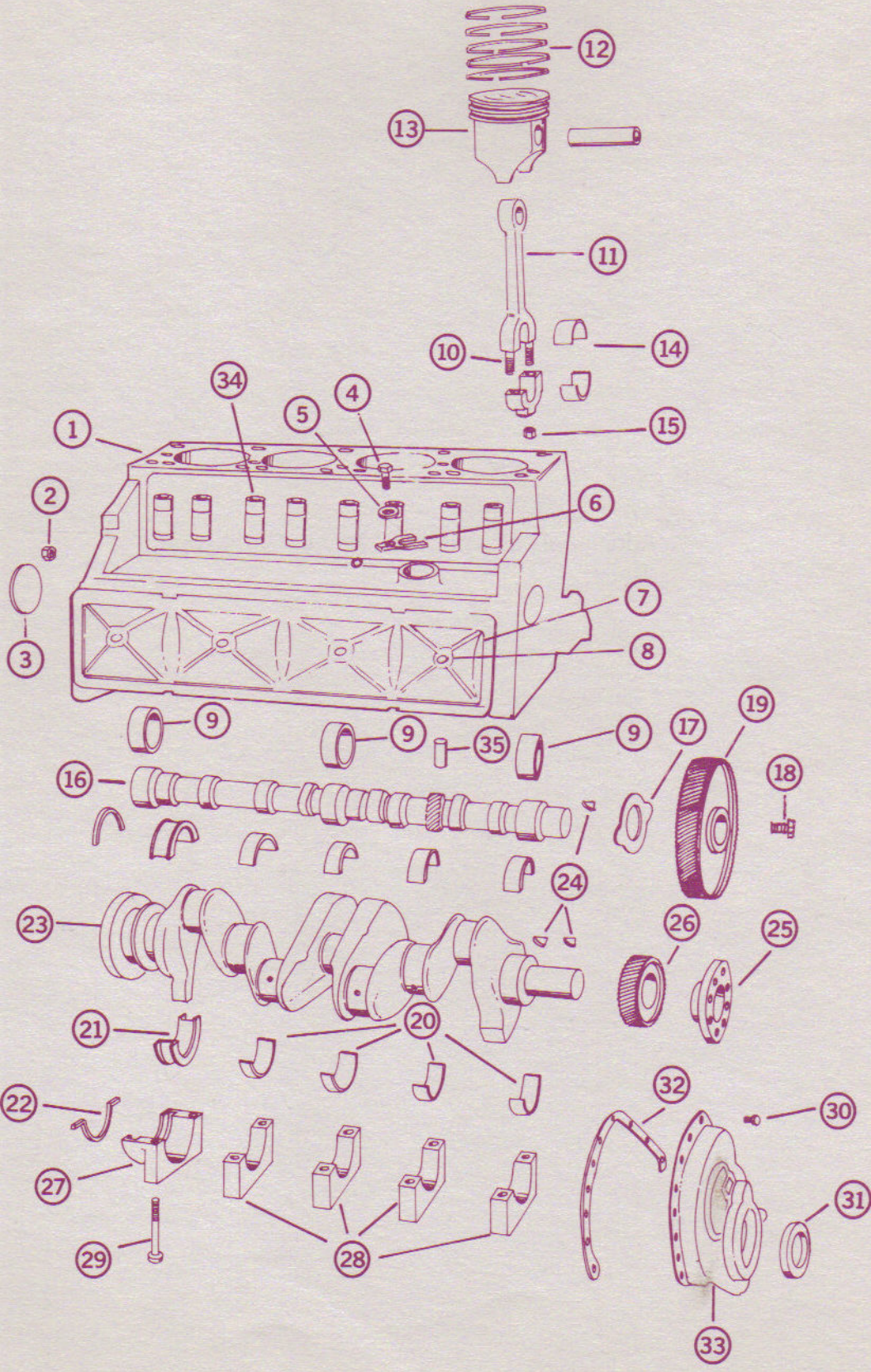
BASIC ENGINE BLOCK GROUP



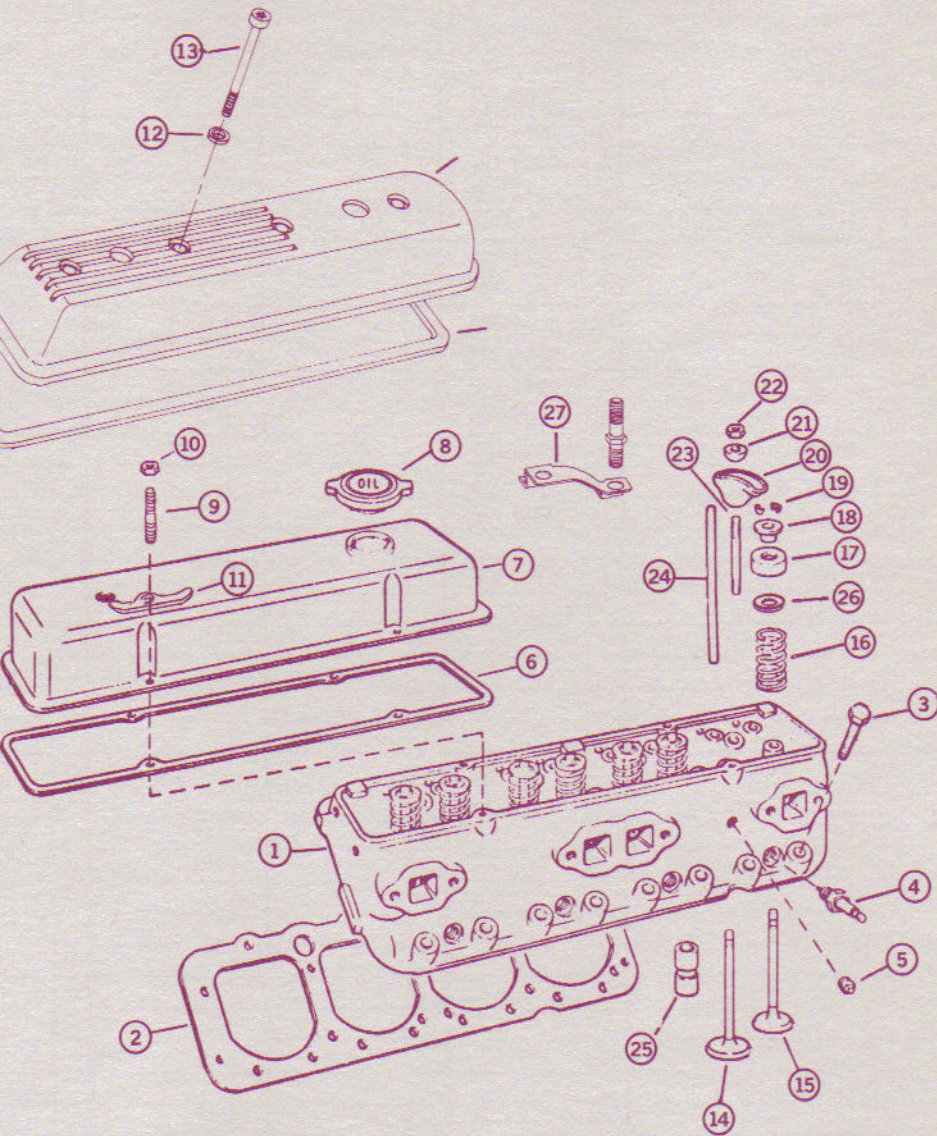
BASIC ENGINE BLOCK GROUP 181-GM

REF. NO.	DESCRIPTION	QTY	181	QTY		QTY		QTY		QTY
Z	ENGINE - ¾ ASM	1	0014-000							
2	CYLINDER CASE ASM	1	0014-001							
3	PLUG - CAM BRG CUP	1	0000-878							
4	BOLT - DISTRIBUTOR	1	0314-041							
5	WASHER - DISTRIBUTOR	1	0314-040							
6	CLAMP - DISTRIBUTOR	1	0314-042							
7	COVER - PUSH ROD	1	0014-401							
8	BOLT & SEAL PUSH ROD CVR	4	0014-403							
9	BRG - CAM SHAFT	3	0014-189							
10	BOLT - CONNECTING ROD	8	0014-066							
11	ROD - CONNECTING ROD	4	0014-036							
12	RING SET - PISTON	4	0014-348							
13	PISTON & PIN ASM	4	0014-037							
14	BRG - CONNECTING ROD	4	0014-038							
15	NUT - CONNECTING ROD BOLT	8	0009-067							
16	CAMSHAFT	1	0014-089							
17	BRG UNIT - CAMSHAFT THRUST	1	0014-092							
18	SCREW & WASHER CAM GEAR	2	0003-059							
19	GEAR - CAMSHAFT	1	0014-081							
20	BRG - CRANK-SHF #1-4	4	0014-505							
21	BRG - CRANK-SHF #5	1	0014-009							
22	SEAL - REAR CRANKSHF	1	0014-033							
23	CRANKSHAFT	1	0014-021							
24	KEY - CR/CM - GEAR & DAMPER	3	0009-209							
25	DAMPER - TORSIONAL	1	0014-004							
26	GEAR - CRANKSHAFT	1	0014-082							
27	CAP - REAR MAIN	1								
28	CAP - MAIN	4								
29	BOLT - MAIN CAP	10	0014-153							
30	SCREW & LOCKWASHER - FRT CVR	8	0003-059							
31	SEAL - CR SHF FRT	1	0014-005							
32	GASKET - FRT CVR	1	0014-061							
33	COVER - FRT CYL CASE	1	0014-058							
34	LIFTERS	8	0007-097							
35	BRG - DIST SHF PILOT	1	0014-411							
★	GASKET - PUSH ROD COVER	1	0014-402							

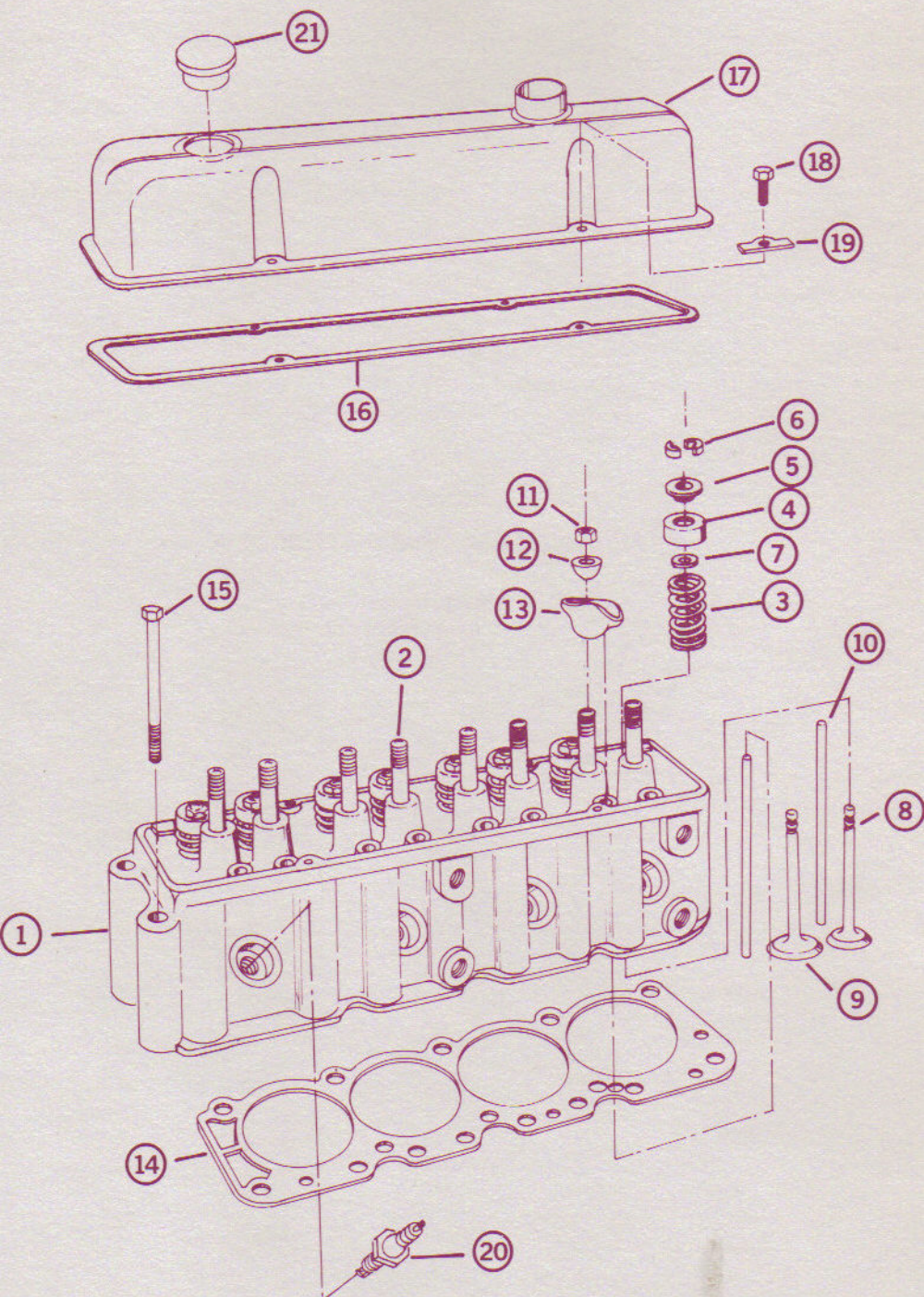
BASIC ENGINE BLOCK GROUP 181-GM



BASIC ENGINE CYLINDER HEAD GROUP



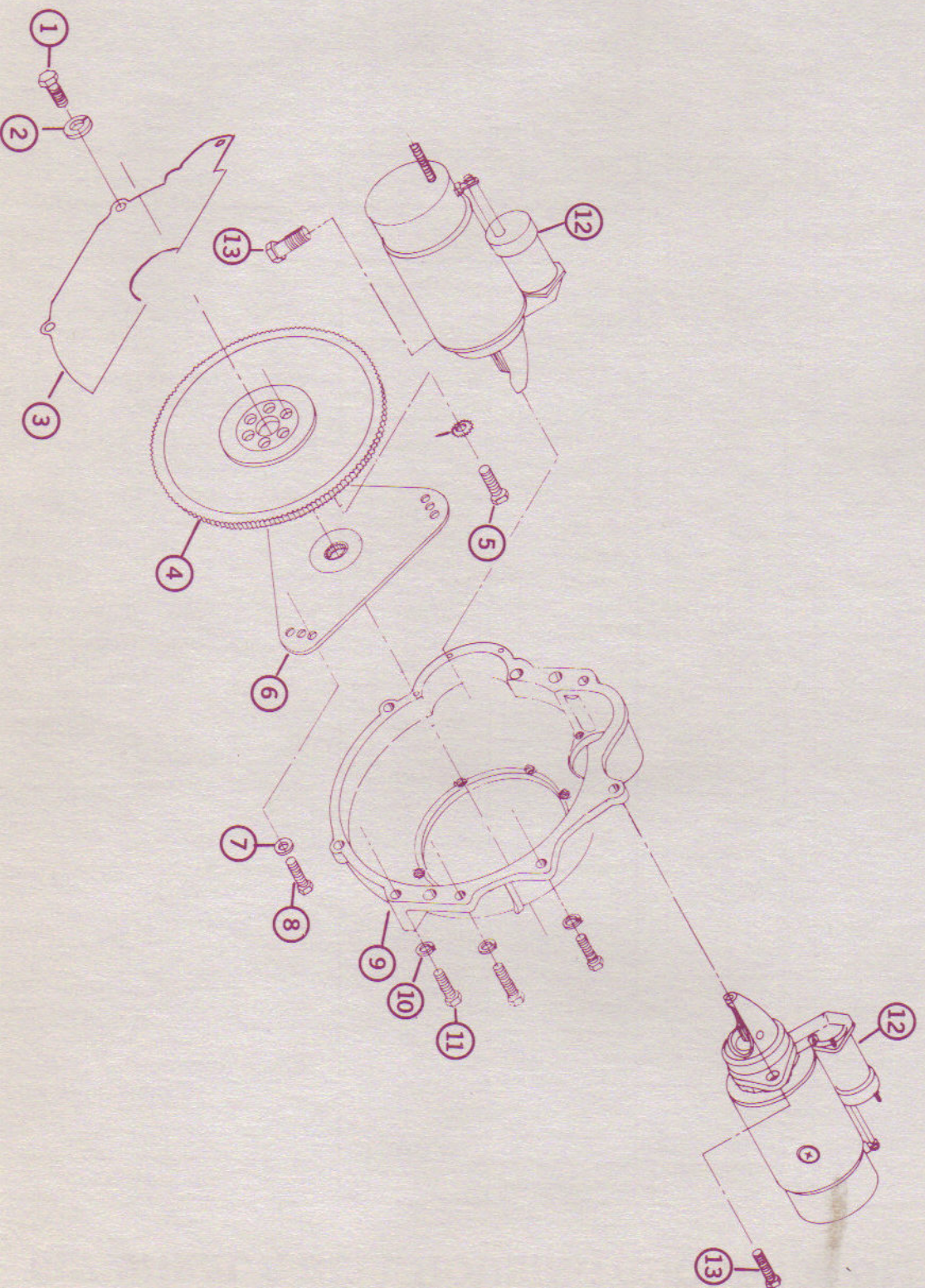
BASIC ENGINE CYLINDER HEAD GROUP 181-GM



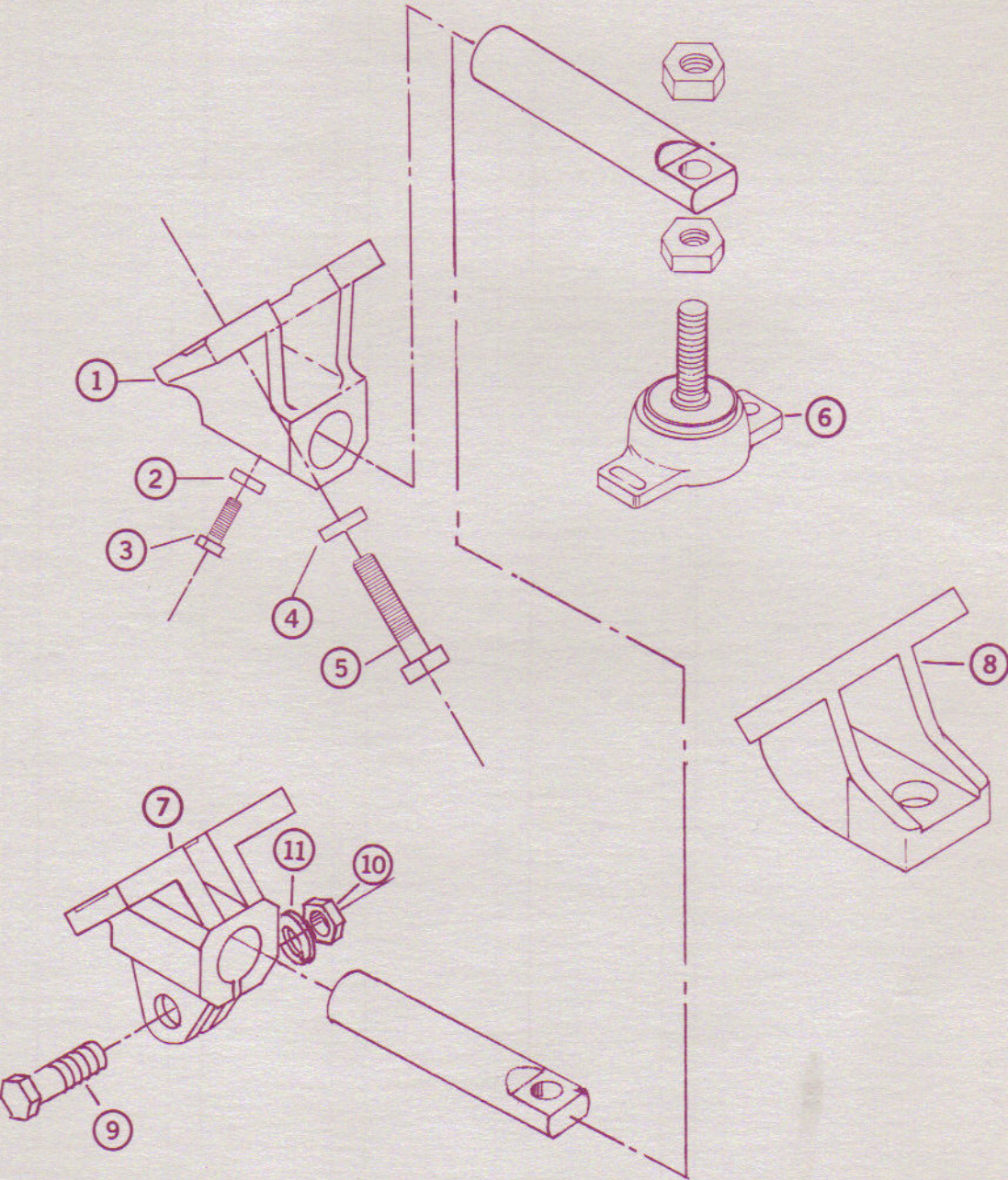
BASIC ENGINE FLYWHEEL & BELL HOUSING GROUP

REF. NO.	DESCRIPTION	QTY	262	QTY	350	QTY	350P	QTY	454	QTY	454P
1	BOLT	5	000B-408		-		-		-		-
2	LOCK WASHER	5	00WL-004		-		-		-		-
3	DUST COVER - REAR ENTRY	1	0150-000		-		-		-		-
3	DUST COVER - FORWARD ENTRY		0151-000		-		-		-		-
4	FLYWHEEL - 14" FORWARD ENTRY	1	0009-141		0007-141		-	1	0003-141		-
4	FLYWHEEL - 14" REAR ENTRY	1	0009-140		0007-140		-	1	0003-140		-
4	FLYWHEEL - 12¾" FORWARD ENTRY	1	0009-142		0007-142		-				
5	BOLT FLYWHEEL	6	0007-160		-		-	6	0003-160		-
6	DAMPER ASM	1	0071-000		-		-		0070-000		-
7	LOCK WASHER	3	00WL-006		-		-		-		-
8	BOLT	3	000B-616		-		-		-		-
9	BELL HOUSING**	1	0100-000		-		-		-		-
10	LOCK WASHER	5	00WL-006		-		-	4	-		-
11	BOLT	2	000B-640		-		-		-		-
11	BOLT	3	000B-620		-		-	2	-		-
12	STARTER* REAR ENTRY	1	0170-000		-		-		-		-
12	STARTER* REAR ENTRY - REVERSE	1	0171-000		-		-		-		-
12	STARTER* - FORWARD ENTRY - 14" FLYWHEEL	1	0174-000		-		-		-		-
12	STARTER* - FORWARD ENTRY - 12¾" FLYWHEEL	1	0172-000		-		-		-		-
13	BOLT - STARTER - R ENTRY	2	000B-716		-		-		-		-
13	BOLT - STARTER - F ENT IB - 12¾" FWL	1	0180-000		-		-		-		-
13	BOLT - STARTER - F ENT - OB - 12¾" FWL	1	0181-000		-		-		-		-
13	BOLT - STARTER - F ENT - 14" FWL	2	0181-000		-		-		-		-
	*For starter parts see Electrical Section.										
	**New BELL HOUSING will replace all previous BELL HOUSING.										
★	SHIM - FWD WNT STARTER		0176-000		-		-		-		-
★	PLUG - BELL HOUSING	1	0100-001		-		-		-		-

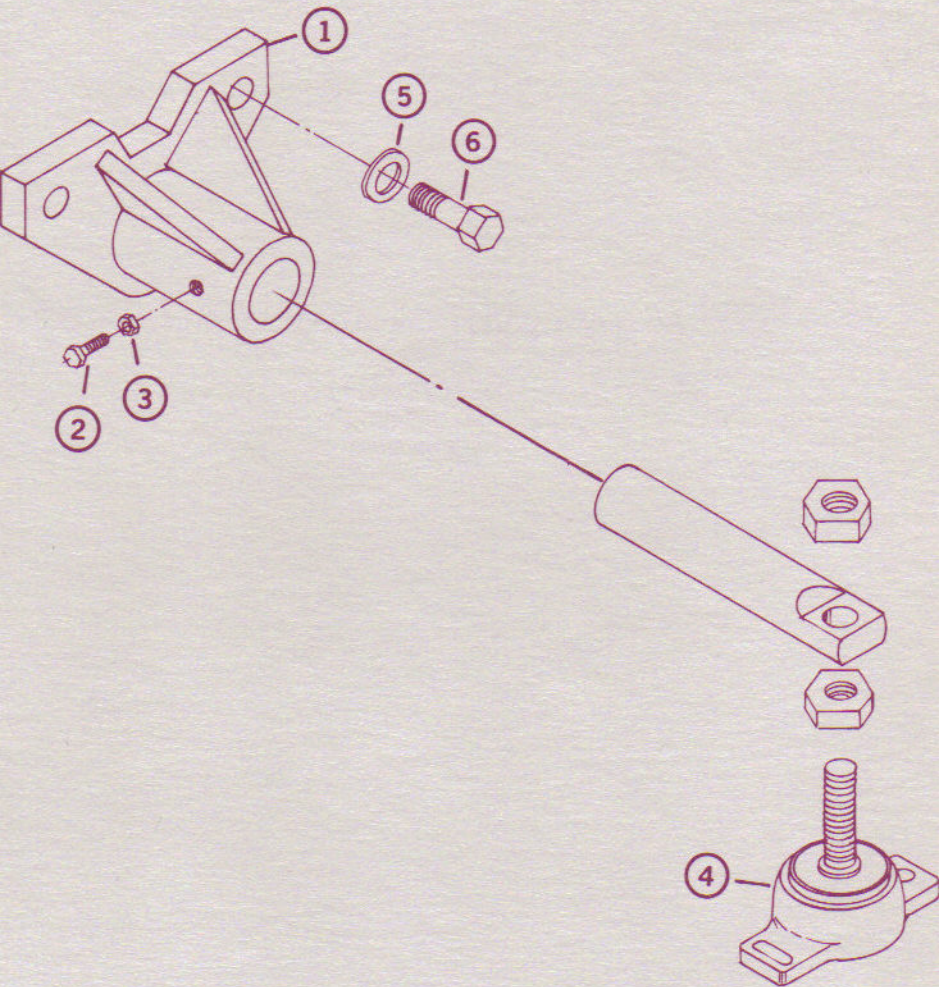
BASIC ENGINE FLYWHEEL & BELL HOUSING GROUP



BASIC ENGINE MOUNTING GROUP



BASIC ENGINE MOUNTING GROUP



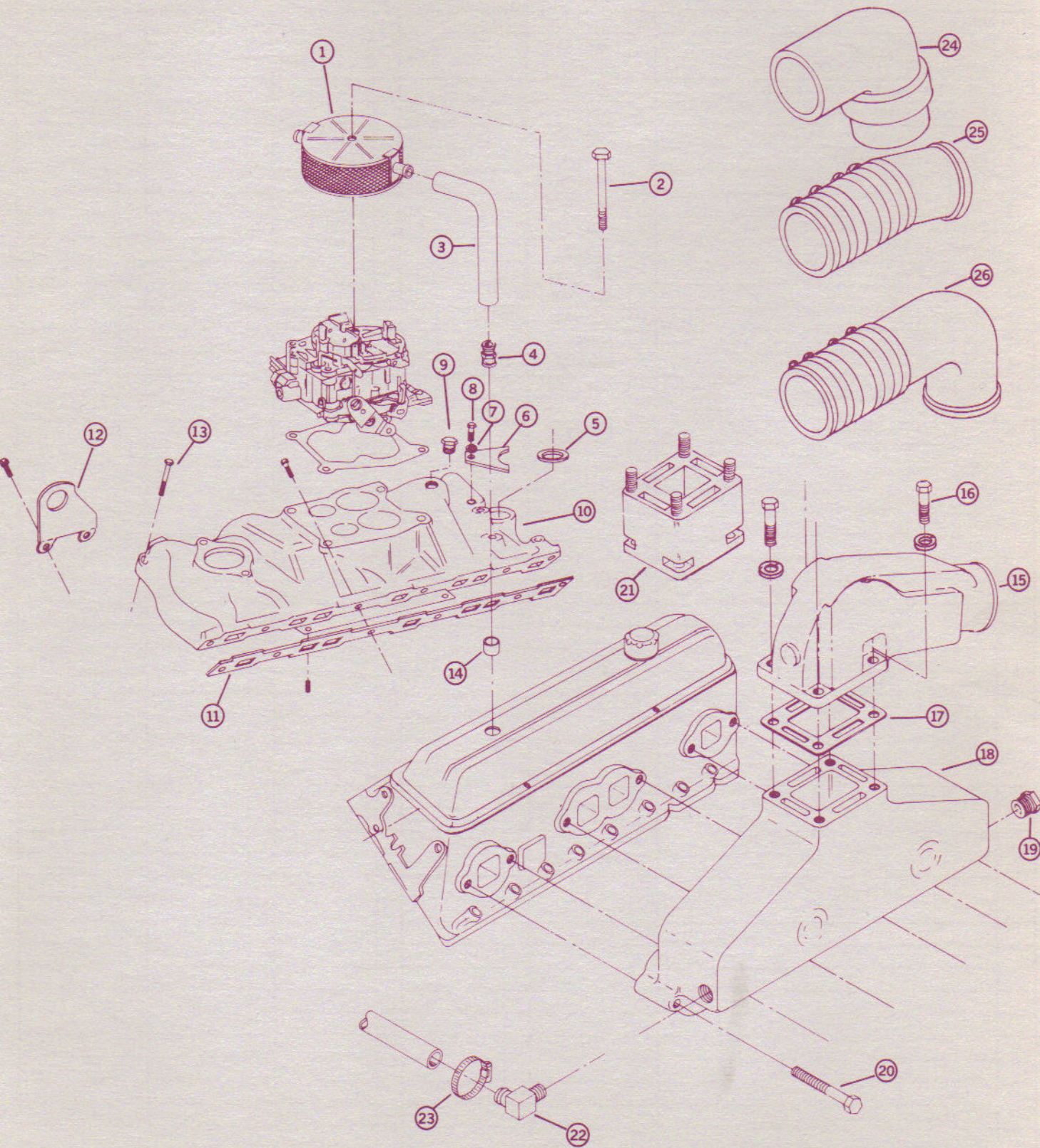
INTAKE & EXHAUST SYSTEM

INTAKE & EXHAUST GROUP

REF. NO.	DESCRIPTION	QTY	262	QTY	350	QTY	350P	QTY	454	QTY	454P
1	FLAME ARRESTOR	1	0951-000		-		-		0952-000		-
2	BOLT	1	00BS-456		-		-		00BS-464		-
3	HOSE	2	0HHT-010		-		-				-
4	FITTING - VENT	2	0000-887		-		-				-
5	GASKET - DISTRIBUTOR	1	0303-043		-		-				-
6	CLAMP - DISTRIBUTOR	1	0303-042		-		-				-
7	WASHER - DISTRIBUTOR BOLT	1	0303-040		-		-				-
8	BOLT - DISTRIBUTOR	1	0303-041		-		-				-
9	PLUG	1	0303-060		-		-				-
10	MANIFOLD ASM - INLET	1	0009-275		0007-275		0011-275		0003-275		0005-275
11	GASKET SET - INL MANIFOLD	1	0009-280		0007-280		0007-280		0003-280		0005-280
12	LIFTING RING - FRONT	1	0009-501		-		-		0003-501		-
12	LIFTING RING - REAR	1	0009-502		-		-		0003-502		-
13	BOLT - INL MANFLD	8	0007-286	9	-		-	14	0003-286	12	-
13	BOLT - LH #1 & #2	2	0007-287	2	0007-287		-	2	0003-287	4	0005-287
13	BOLT - RH #6	2	0007-287	1	0007-287		-				
14	GROMMET	2	0307-006		-		-		0303-006		-
15	RISER	2	0992-115		0992-000		0992-040		0992-000		0992-040
15	RISER 4"	2		Opt	0992-040			Opt	0992-040		
16	BOLT - SS	8	00BS-616		-		-				-
17	GASKET	2	0992-310		0992-300		-				-
18	MANIFOLD - EXHAUST	2	0996-000		0994-000		-		0991-000		-
19	PLUG	8	0992-002		-		-				-
20	BOLT	12	00BS-652		-		-	16	00BS-620		-
21	SPACER - 3" OPT			2	0992-630		-				-
22	FITTING	2	0000-815		-		-				-
23	CLAMP	2	00CH-016		-		-				-
24	ELBOW - EXH - 3"-4" OPT	2	0992-534		-		-				-
25	ELBOW - EXH - 3 OD - 2.5" OPT	2	0992-532		-		-				-
25	ELBOW - EXH - 3 OD - 3" OPT	2	0992-533		-		-				-
26	ELBOW - EXH - 3 OD - 2.5" OPT	2	0992-592		-		-				-
26	ELBOW - EXH - 3 OD - 3" OPT	2	0992-593		-		-				-
★	WASHER - FLAME ARRESTOR	1	00WN-004		-		-				-
★	MANIFOLD - EXH - MERC-REP				0994-100		-				-
★	RISER - MERC-REP - 15°				0992-115		-				-
★	RISER - MERC-REP - 0°		0992-115		-		-				-

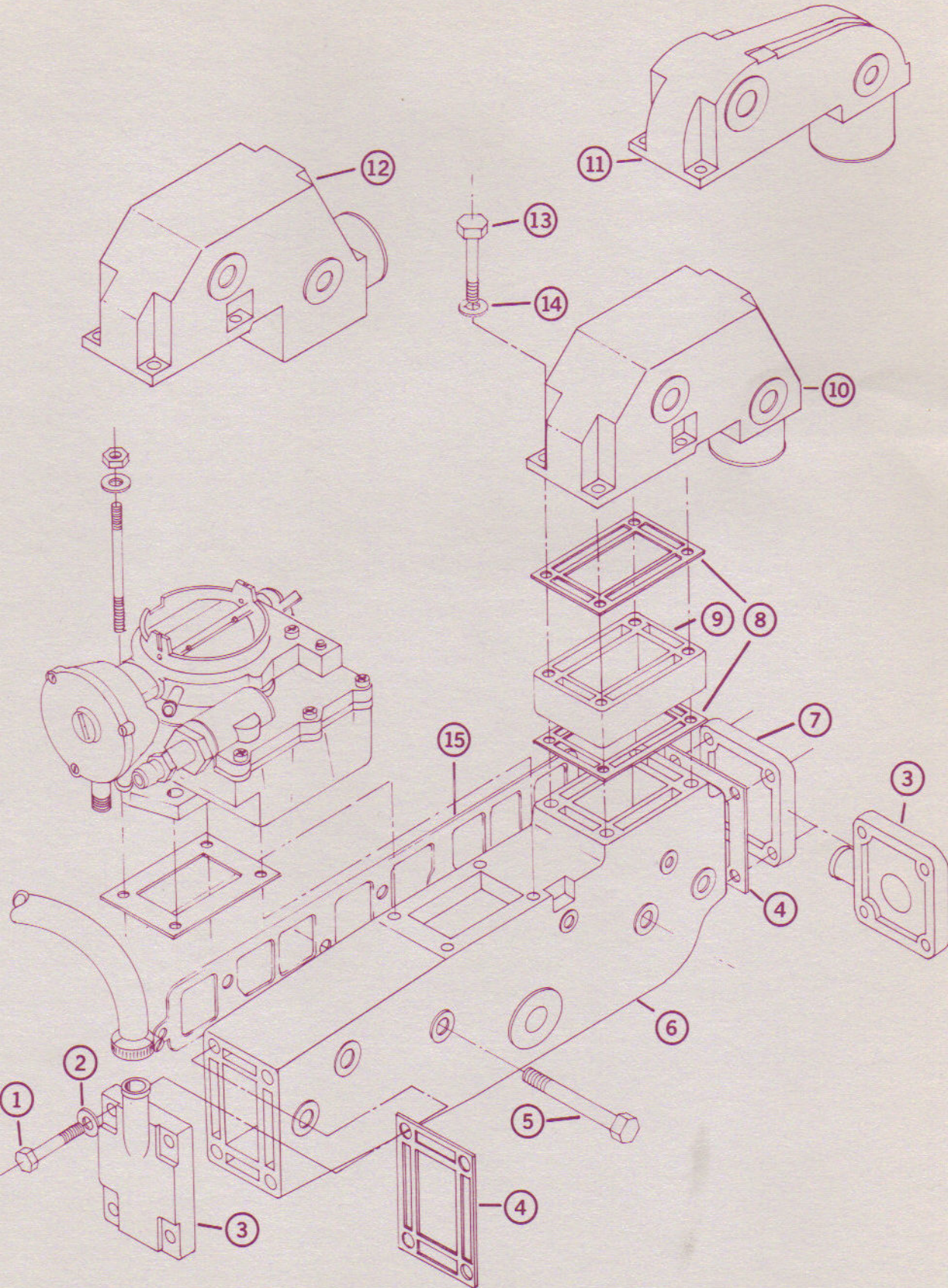
INTAKE & EXHAUST SYSTEM

INTAKE & EXHAUST GROUP



INTAKE & EXHAUST SYSTEM

INTAKE & EXHAUST GROUP

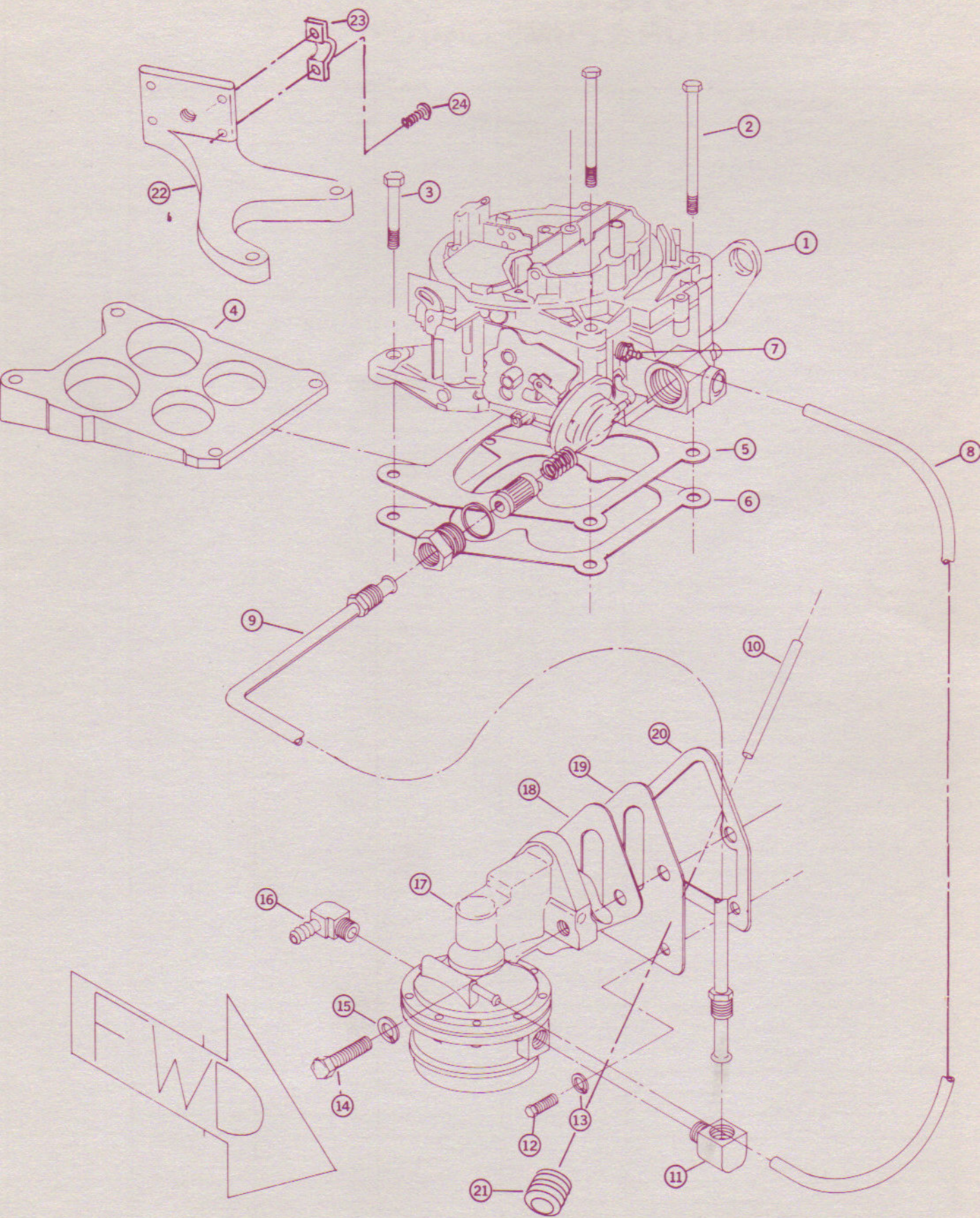


FUEL SYSTEM CARBURETOR & PUMP GROUP

REF. NO.	DESCRIPTION	QTY	262	QTY	350	QTY	350P	QTY	454	QTY	454P
1	CARBURETOR	1	0701-000		-		-		0702-000		-
2	BOLT	2	00BS-564		-		-		-		-
3	BOLT	2	00BS-528		-		-		-		-
4	WEDGE - OPT	1	0699-000		-		-		-		-
5	GASKET	1	0699-001		-		-		-		-
6	GASKET - INSULATOR	1	0700-002		-		-		-		-
7	FITTING - FUEL VENT	1	0000-884		-		-		-		-
8	HOSE (BULK NUMBER)	1	0000-690		-		-		-		-
9	LINE - FUEL	1	0431-000		0430-000		-		0432-000		0433-000
10	ROD - FUEL PUMP PUSH	1	0309-015		0307-015		-		-		-
11	FITTING - FUEL PUMP	1	0000-882		-		-		-		-
12	BOLT	2	0000-010		-		-		-		-
13	LOCK WASHER	2	0000-410		-		-		-		-
14	BOLT	2	000B-624		-		-		000B-620		-
15	LOCK WASHER	2	00WL-006		-		-		-		-
16	FITTING	1	0000-883		-		-		-		-
17	PUMP - FUEL	1	0309-016		0307-016		-		0303-016		-
18	GASKET	1	0309-023		0307-023		-		0303-023		-
19	PLATE - FUEL PUMP	1	0309-021		0307-021		-		-		-
20	GASKET	1	0309-020		0307-020		-		-		-
21	PLUG							1	0303-014		-
22	THROTTLE BKT		1190-000	1	-		-		-		-
23	CLAMP - THROTTLE CABLE		0000-001	1	-		-		-		-
24	SCREW - CLAMP		0S10-2408	2	-		-		-		-
★	THERMOCHOKE	1	0307-010		-		-		0303-010		-
	HP ROD THERMOCHOKE						0309-011				0305-011

FUEL SYSTEM

CARBURETOR & PUMP GROUP

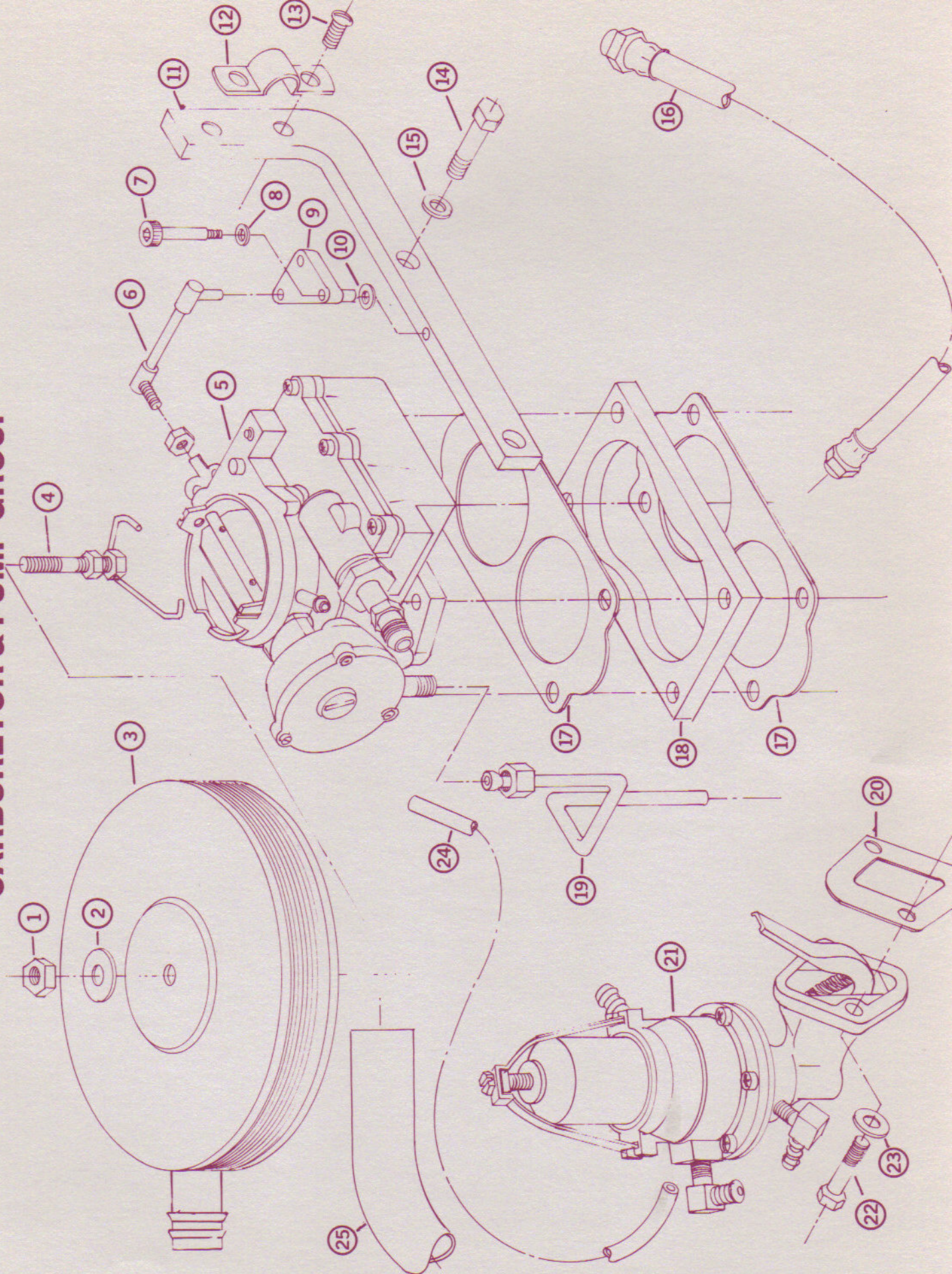


FUEL SYSTEM CARBURETOR & PUMP GROUP

4 CYL GM

REF. NO.	DESCRIPTION	QTY	181	QTY	QTY	QTY	QTY
1	NUT	1	0NLS-004				
2	WASHER	1	00WN-004				
3	FLAME ARRESTOR	1	0954-000				
4	BAIL	1	0954-001				
5	CARBURETOR	1	0703-000				
6	LINKAGE - THROTTLE	1	1192-002				
7	BOLT - SHOULDER	1	1192-004				
8	WASHER	1	00WS-005				
9	BELLCRANK	1	1192-001				
10	WASHER	1	00WS-005				
11	THROTTLE BKT	1	1192-000				
12	CLAMP - THROTTLE CABLE	1	0000-001				
13	SCREW	2	0S10-2408				
14	BOLT	2	00BS-516				
15	LOCKWASHER	2	0WLS-005				
16	FUEL LINE	1	0434-000				
17	GASKET	2	0703-001				
18	SPACER	1	0703-002				
19	CHOKE TUBE	1	0703-010				
20	GASKET	1	0314-023				
21	FUEL PUMP	1	0314-016				
22	BOLT	2	000B-516				
23	LOCKWASHER	2	00WL-005				
24	HOSE - VENT	1	00HV-004				
25	HOSE	1	0HHT-010				
★	FILTER - FUEL PUMP	1	0314-017				
★	STUD - CARB MT	4	00SS-540				
★	NUT	4	00NS-005				
★	LOCKWASHER	4	0WLS-005				

FUEL SYSTEM CARBURETOR & PUMP GROUP

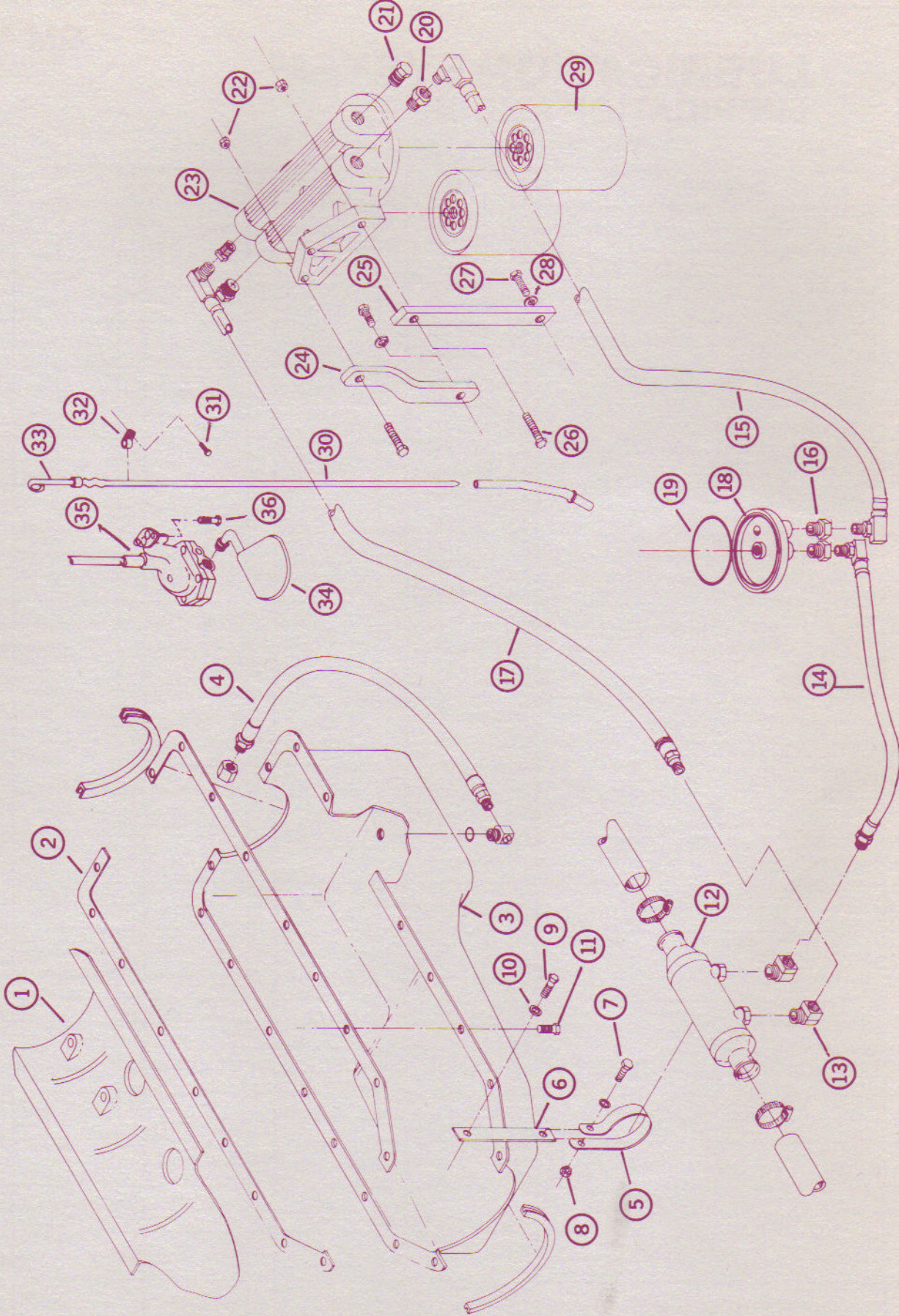


LUBRICATION SYSTEM

LUBRICATION GROUP

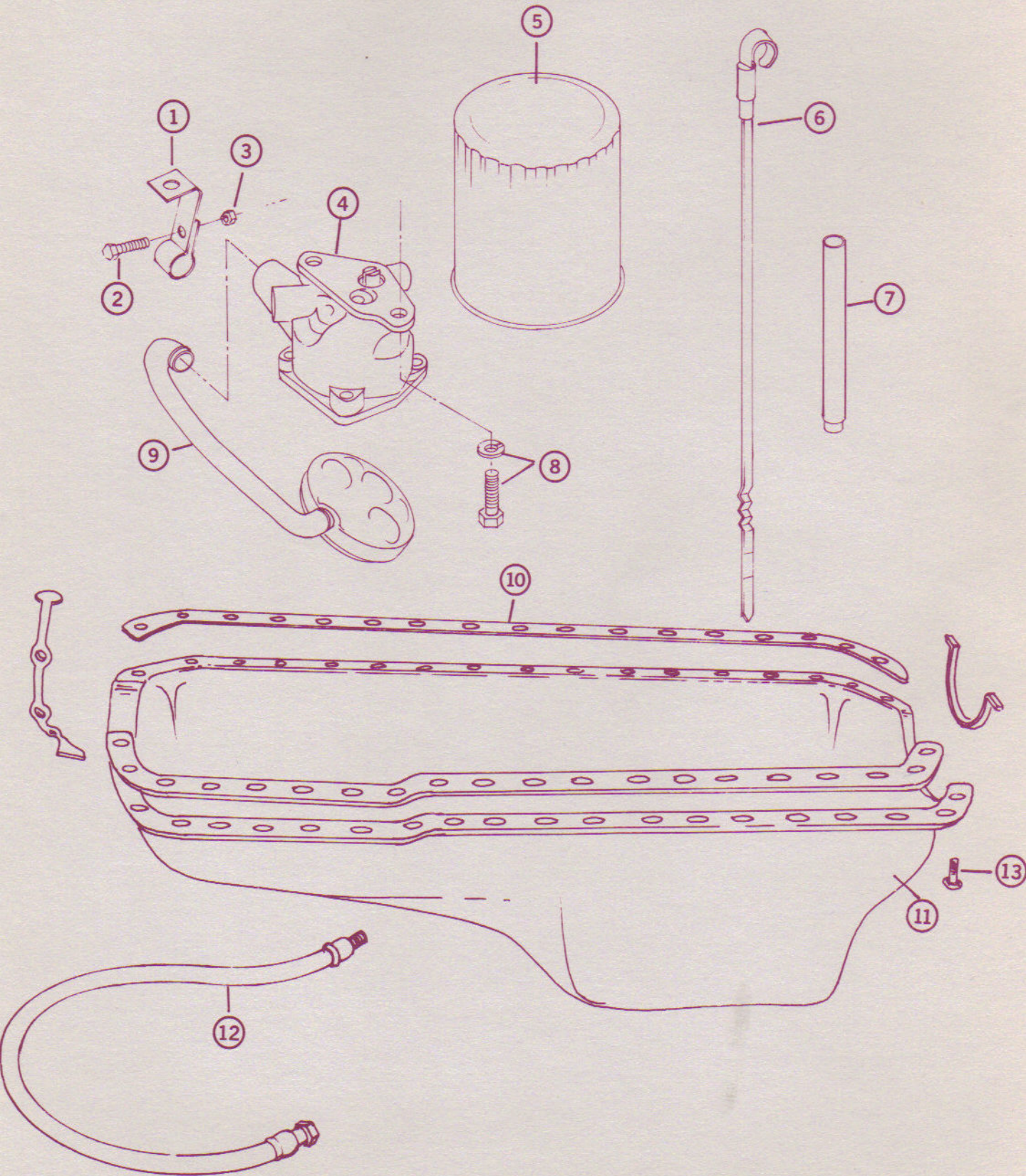
REF. NO.	DESCRIPTION	QTY	262	QTY	350	QTY	350P	QTY	454	QTY	454P
1	BAFFLE – OIL PAN	1	0009-250		0007-250		–		0003-250		–
2	GASKET – OIL PAN	1	0009-245		0007-245A		–		0003-245		–
2	GASKET – OIL PAN – PRE 86	1			0007-245						
3	OIL PAN	1	0009-240		0007-240A		–		0003-240		0005-240
4	OIL DRAIN	1	1460-000		–		–		–		–
Z	OIL COOLER ASM		0440-000		–		–		–		–
5	CLAMP	1	0791-000		–		–		–		–
6	CLAMP – EXTENSION	1	0791-001		–		–		–		–
7	BOLT	1	00BS-612		–		–		–		–
8	NUT	1	0NLS-006		–		–		–		–
9	BOLT	1	00BS-620		–		–		–		–
10	LOCKWASHER	1	0WLS-006		–		–		–		–
11	NUT – #1 LH & #1 RH	2	0009-302		–		–		–		–
11	BOLT – #1 LH & #1 RH	2	0009-301		0007-301		–		0003-301		–
11	BOLT	12	0009-303	14	–		–	20	0003-303		–
12	COOLER	1	0440-001		–		–		–		–
13	FITTING	2	0000-870		–		–		–		–
14	HOSE	1	1250-001		–		–		–		–
15	HOSE	1	1250-002		–		–		–		–
16	FITTING	2	0000-871		–		–		–		–
17	HOSE	1	1250-003		–		–		–		–
Z	BYPASS ASM	1	0521-000		0520-000		–		–		–
18	BYPASS PLATE	1	0521-001		0520-001		–		–		–
19	O-RING	1	0521-002		0520-002		–		–		–
20	FITTING	2	0000-875		–		–		–		–
21	PLUG	2	0000-876		–		–		–		–
22	NUT	2	0NLS-006		–		–		–		–
23	DUAL BASE	1	0900-010		–		–		–		–
24	BRACKET	1	0901-000		–		–		0901-001		–
25	BRACKET	1	0901-002		–		–		–		–
26	BOLT	2	00BS-624		–		–		–		–
27	BOLT	2	00BS-624		–		–		–		–
28	LOCKWASHER	2	0WLS-006		–		–		–		–
29	OIL FILTER – DUAL BASE	2	0904-000		–		–		–		–
30	DIPSTICK TUBE	1	0307-002		–		–		0303-001		–
31	BOLT	1	000B-408		–		–		–		–
32	CLAMP	1	1005-000		–		–		–		–
33	DIPSTICK	1	0307-001		–		–		0303-001		–
34	SCREEN ASM	1	0007-256		–		–		0003-256		0005-256
35	OIL PUMP	1	0007-255		–		–		0003-255		0005-255
36	BOLT – OIL PUMP	1	0007-257		–		–		0003-257		–
★	CLAMP – EXTENSION – I.O.				0791-011		–		–		–
★	OIL FILTER – I.O.	1	0905-001	1	0905-000		–		–		–
★	Z OIL COOLER – I.O. ASM OPT				0442-000		–	1	–		–
★	HOSE OPT				1255-001		–	1	–		–
★	HOSE OPT				1255-002		–	1	–		–
★	ADAPTER – OIL COOLER OPT				0525-000		–	1	–		–
★	FITTING – ADAPTER OPT				0000-872		–	2	–		–
★	FITTING – COOLER OPT				0000-870		–	2	–		–
★	COOLER – OIL				0442-001		–	1	–		–
★	SHAFT – OIL PUMP DRIVE	1	0007-258		–		–		0003-258		0005-258
★	RETAINER – OIL PUMP DRIVE SHAFT	1	0007-259		–		–		–		–

LUBRICATION SYSTEM LUBRICATION GROUP



LUBRICATION SYSTEM

LUBRICATION GROUP

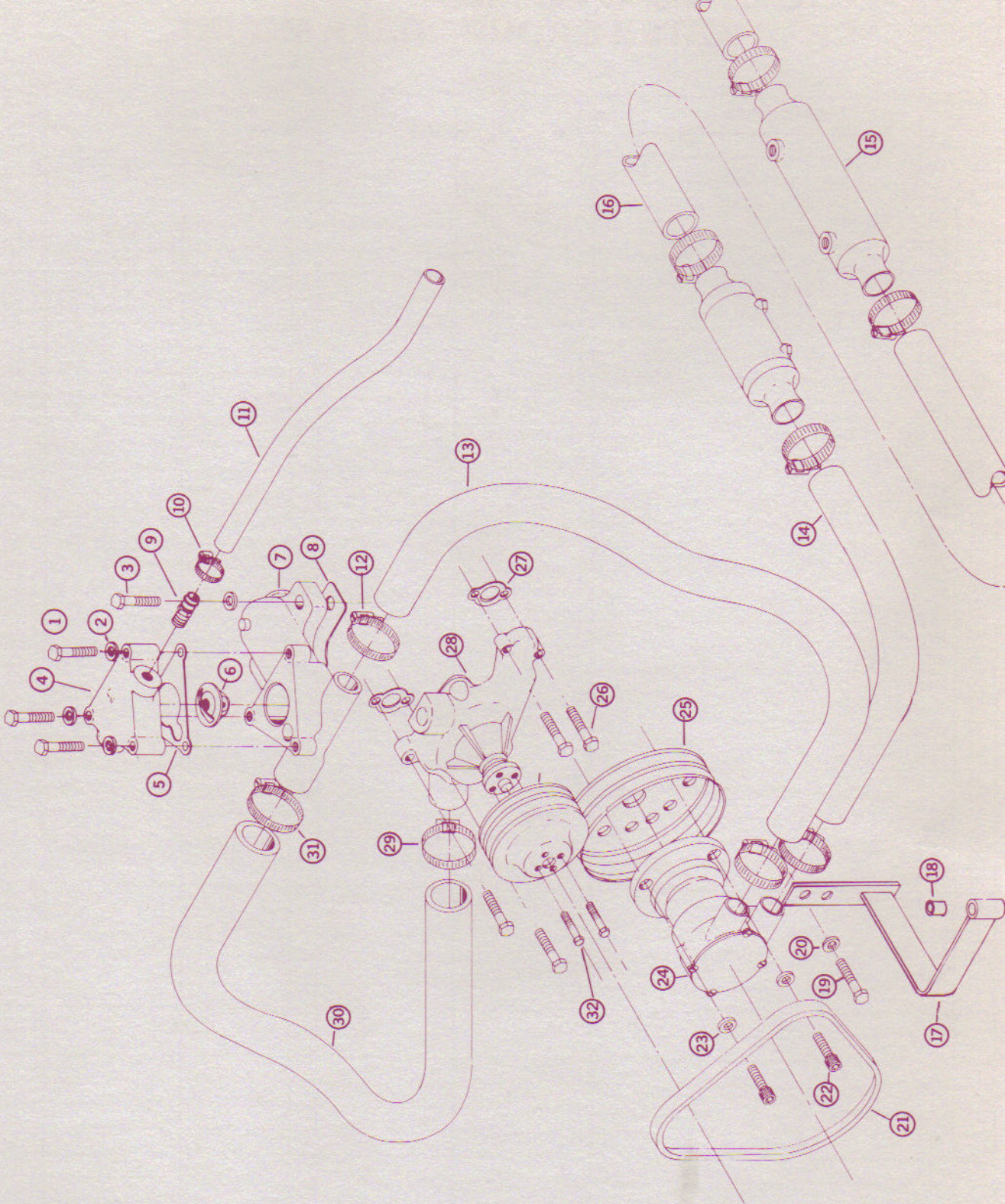


COOLING SYSTEM

RAW WATER COOLING GROUP

REF. NO.	DESCRIPTION	QTY	262	QTY	350	QTY	350P	QTY	454	QTY	454P
Z	THERMOSTAT HOUSING ASSY INCLUDES	1	0210-000		-		-		0212-000		-
1	BOLT	3	00B5-536		-		-		-		-
2	LOCK WASHER	3	0WLS-005		-		-		-		-
3	BOLT	2	000B-620		-		-		-		-
4	HOUSING CAP	1									
5	GASKET	1	0210-001		-		-		-		-
6	THERMOSTAT – 142°	1	0210-002		-		-		-		-
7	HOUSING BASE	1									
8	GASKET	1	0303-009		-		-		-		-
9	FITTING	2	0000-800		-		-		-		-
10	CLAMP – HOSE	2	00CH-016		-		-		-		-
11	HOSE (BULK NUMBER)	2	0HHT-016		-		-		-		-
12	CLAMP	7	00CH-020		-		-		-		-
13	HOSE PREFORMED	1	1455-000		-		-		-		-
14	HOSE PREFORMED	1	1456-000		-		-		-		-
15	COOLER – GEAR 1.00 RATIO	1	0442-001		-		-		1440-000		-
15	COOLER – GEAR REDUCTION	1	1440-000		-		-		-		-
15	COOLER – GEAR 2.10 ONLY	1	1441-000		-		-		-		-
16	HOSE (BULK NUMBER)	1	HWRP-020		-		-		-		-
17	BRACKET – PUMP	1	0573-000		-		0573-001		0572-000		-
18	BUSHING – RUBBER	1	0572-001		-		-		-		-
19	BOLT	2	00BS-616		-		-		-		-
20	LOCK WASHER	4	0WLS-006		-		-		0WLS-007		-
21	BELT	1	13441		-		-		13461		-
22	BOLT	3	00BF-620		-		-		00BA-632		00BF-620
23	LOCK WASHER	3	00WL-006		-		-				-
24	PUMP ASSY	1	0563-000		-		-		0562-000		-
25	PULLEY – CRANKSHAFT	1	0307-028		-		-		0303-008		-
26	BOLT	3	000B-628		-		-	4	-		-
26	BOLT	1	000B-644		-		-				
27	GASKET	2	0307-050		-		-		0303-050		-
28	PUMP ASSY – CIR	1	0007-071		-		-		0003-064		-
29	CLAMP	1	00HC-028		-		-		00HC-032		-
30	HOSE – PREFORMED	1	1452-000		-		-		1451-000		-
31	CLAMP	1	00HC-028		-		-		-		-
32	BOLT	4	00BF-512		-		-		-		-
33	PULLEY – CIR PUMP	1	0307-007		-		-		0303-007		-
Opt	THERMOSTAT – 180°	Opt	0210-003		-		-		-		-
Opt	PULLEY – CRANKSHAFT – 3 GROOVE	Opt	0307-038		-		-		0303-038		-
Opt	PULLEY – CRANKSHAFT – 2 GROOVE	Opt							0303-028		-

COOLING SYSTEM RAW WATER COOLING GROUP

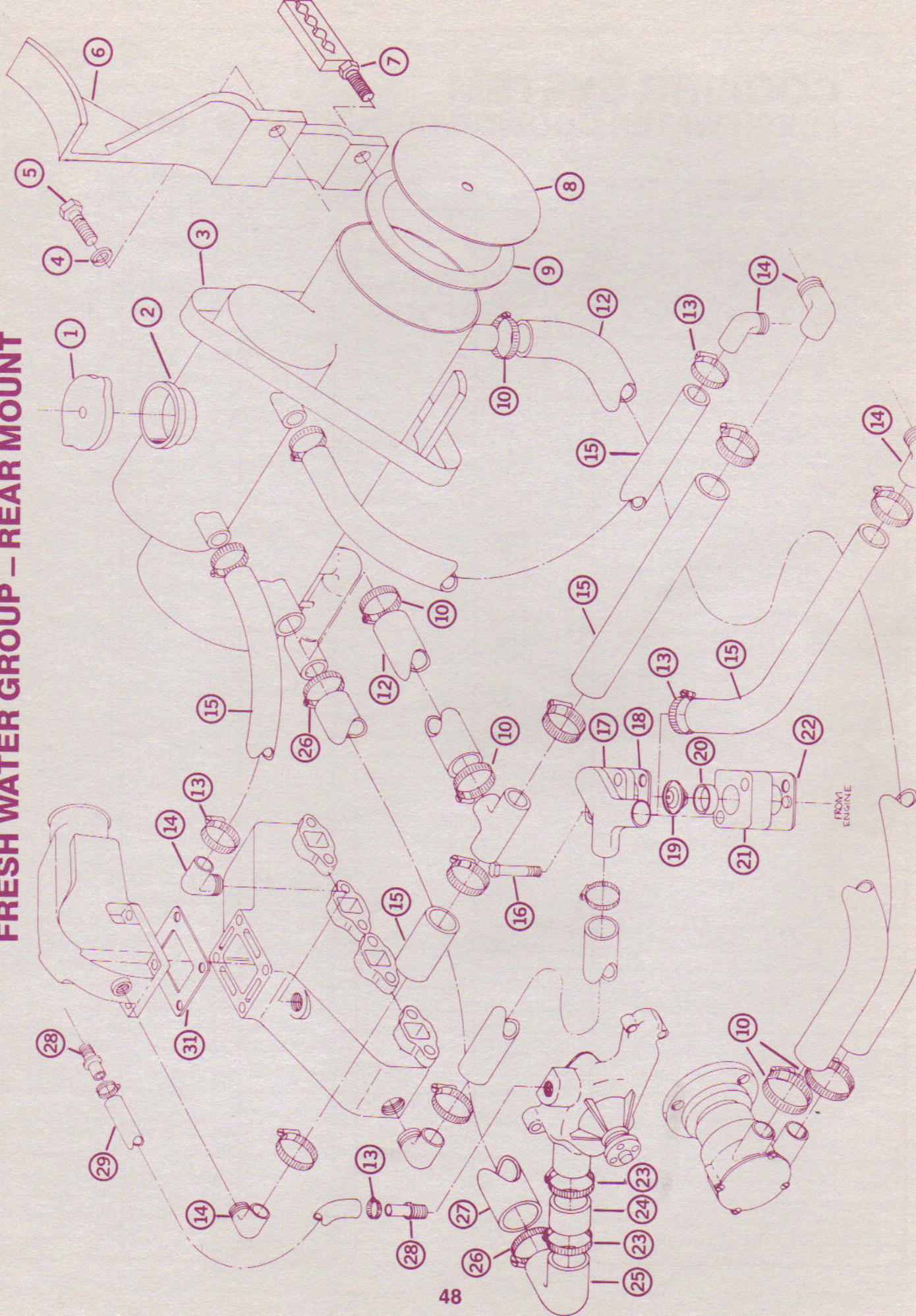


COOLING SYSTEM

FRESH WATER GROUP – REAR MOUNT

REF. NO.	DESCRIPTION	QTY	262	QTY	350	QTY	350P	QTY	454	QTY	454P
1	CAP	1	0500-005		-		-		-		-
2	TANK	1	0505-003		-		-		0500-003		-
3	CLAMP	2	00HC-080		-		-		-		-
4	LOCKWASHER	4	00WL-006		-		-		00WL-007		-
5	BOLT	2	000B-616		-		-		000B-716		-
6	BRACKET – TANK MOUNT – LH	1	0505-014		-		-		0500-014		-
6	BRACKET – TANK MOUNT – RH	1	0505-015		-		-		0500-015		-
7	BOLT & PLUG WIRE MOUNT	2	0RPB-616		-		-		0RPB-716		-
8	END PLATE	2	0500-008		-		-		-		-
9	GASKET	2	0500-012		-		-		-		-
10	CLAMP	5	00HC-020		-		-		-		-
11	PAD	2	0500-020		-		-		-		-
12	HOSE – BULK #		HWRP-020		-		-		-		-
13	CLAMP	12	00HC-016		-		-	14	-		-
14	FITTING	6	0000-815		-		-		-		-
15	HOSE – BULK #		HWRP-016		-		-		-		-
16	BOLT	2	00BS-656		-		-		-		-
17	TOP – THERMO HSG	1	0505-002		-		-		0500-002		-
18	GASKET	1	0505-007		-		-		-		-
19	THERMOSTAT	1	0500-007		-		-		-		-
20	SPACER	1	0505-008		-		-		-		-
21	BODY THERMO HSG	1	0505-009		-		-		0500-009		-
22	GASKET	1	0505-027		-		-		-		-
23	CLAMP	2	00HC-028		-		-		-		-
24	HOSE – BULK #		HEXH-028		-		-		-		-
25	ELBOW	1	0000-855		-		-		-		-
26	CLAMP	2	00HC-028		-		-		-		-
27	HOSE – BULK #		HWRP-024		-		-		-		-
28	FITTING				-		-	2	0000-809		-
29	HOSE – PREFORMED				-		-	1	1457-000		-
30	FITTING	1	0000-850		-		-		-		-
31	PLATE – BLOCKOFF	2	0501-001		0500-001		-		-		-
★	GASKET – BLOCKOFF PLATE	4	0997-001		0992-001		-		-		-
★	ANODE – ZINC	1	0500-011								

COOLING SYSTEM FRESH WATER GROUP - REAR MOUNT

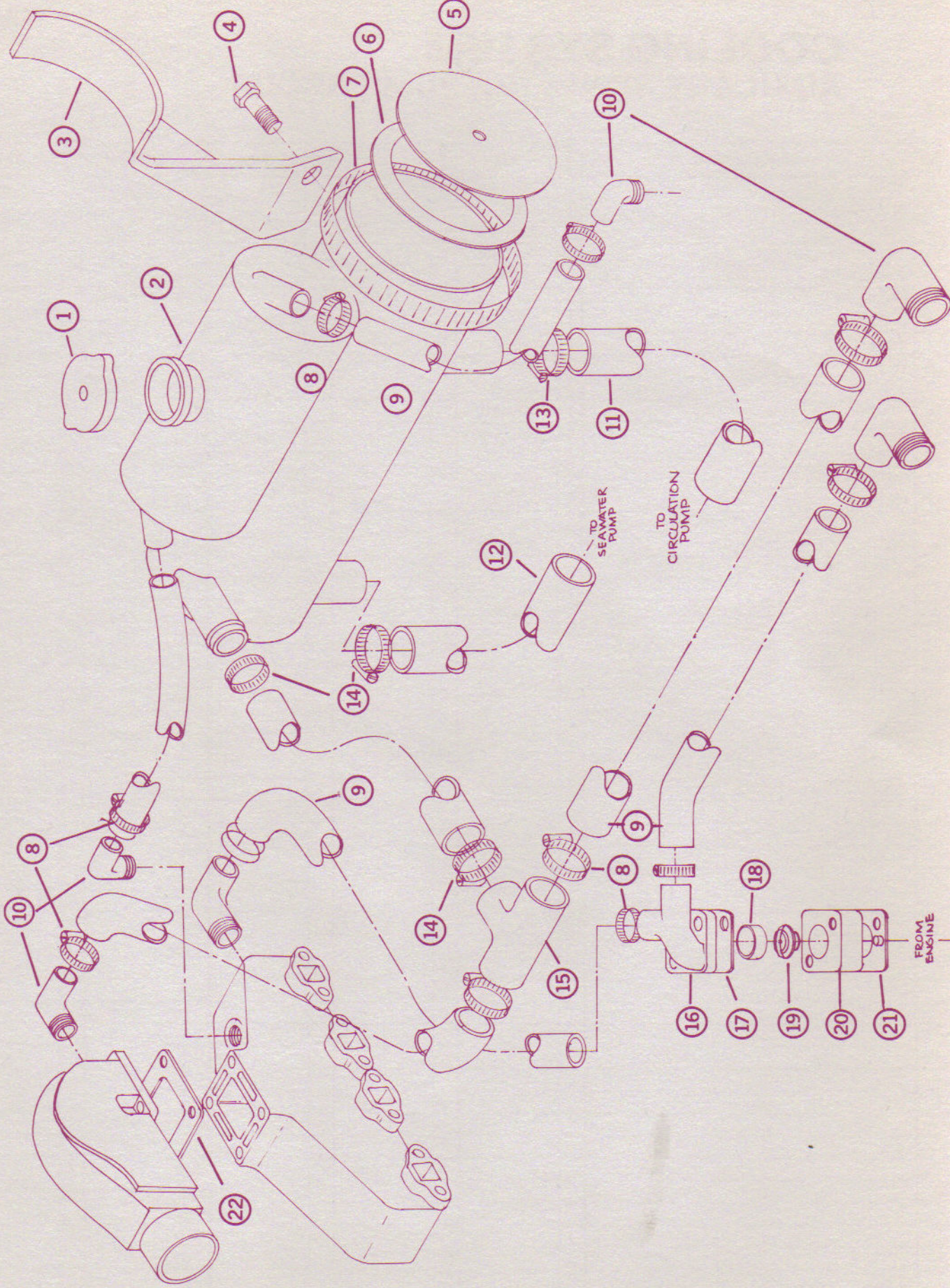


COOLING SYSTEM

FRESH WATER COOLING GROUP (FRONT MT)

REF. NO.	DESCRIPTION	QTY	262	QTY	350	QTY	350P	QTY	454	QTY	454P
1	CAP	1	0500-005		-		-		-		-
2	TANK	1	0506-003		-		-		0509-003		-
3	BRACKET - TANK MOUNT - RH	1	0506-014		-		-		0509-014		-
4	BOLT	2	000B-616		-		-		000B-716		-
5	END PLATE	2	0500-008		-		-		-		-
6	GASKET	2	0500-012		-		-		-		-
7	CLAMP	2	00HC-080		-		-		-		-
8	CLAMP	12	00HC-016		-		-		-		-
9	HOSE - BULK #		HWRF-016		-		-		-		-
10	FITTING	6	0000-815		-		-		-		-
11	HOSE - PREFORMED	1	1452-000		-		-		-		-
12	HOSE - BULK #		HWRF-020		-		-		-		-
13	CLAMP	2	00HC		-		-		-		-
14	CLAMP	4	00HC-020		-		-		-		-
15	FITTING	1	0000-850		-		-		-		-
16	TOP - THERMO HSG	1	0505-002		-		-		0500-002		-
17	GASKET	1	0505-007		-		-		-		-
18	SPACER	1	0505-008		-		-		-		-
19	THERMOSTAT	1	0500-007		-		-		-		-
20	BODY - THERMO HSG	1	0505-009		-		-		0500-009		-
21	GASKET	1	0505-027		-		-		-		-
22	PLATE - BLOCKOFF	2	0501-001		0500-001		-		-		-
★	GASKET - BLOCKOFF PLATE	4	0997-001		0992-001		-		-		-
★	PAD - TANK	2	0500-020		-		-		-		-
★	BKT - TNK MT - RH - POWER STR	1	0506-114		-		-		0509-114		-
★	BKT - TNK MT - LH - POWER STR	1	0506-115		-		-		0509-115		-
★	ANODE - ZINC	1	0500-011								

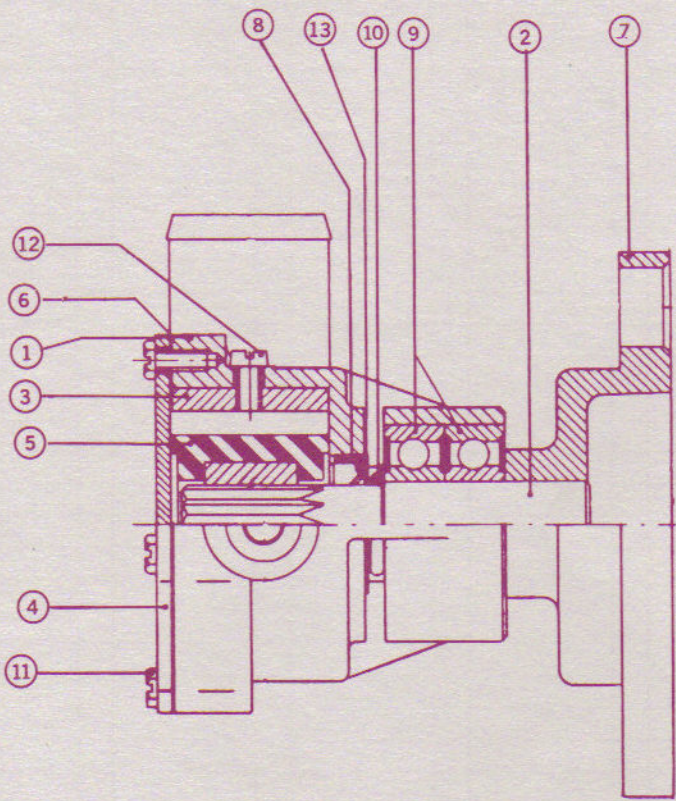
COOLING SYSTEM FRESH WATER COOLING GROUP (FRONT MT)



COOLING SYSTEM AUXILIARY SEAWATER PUMP GROUP

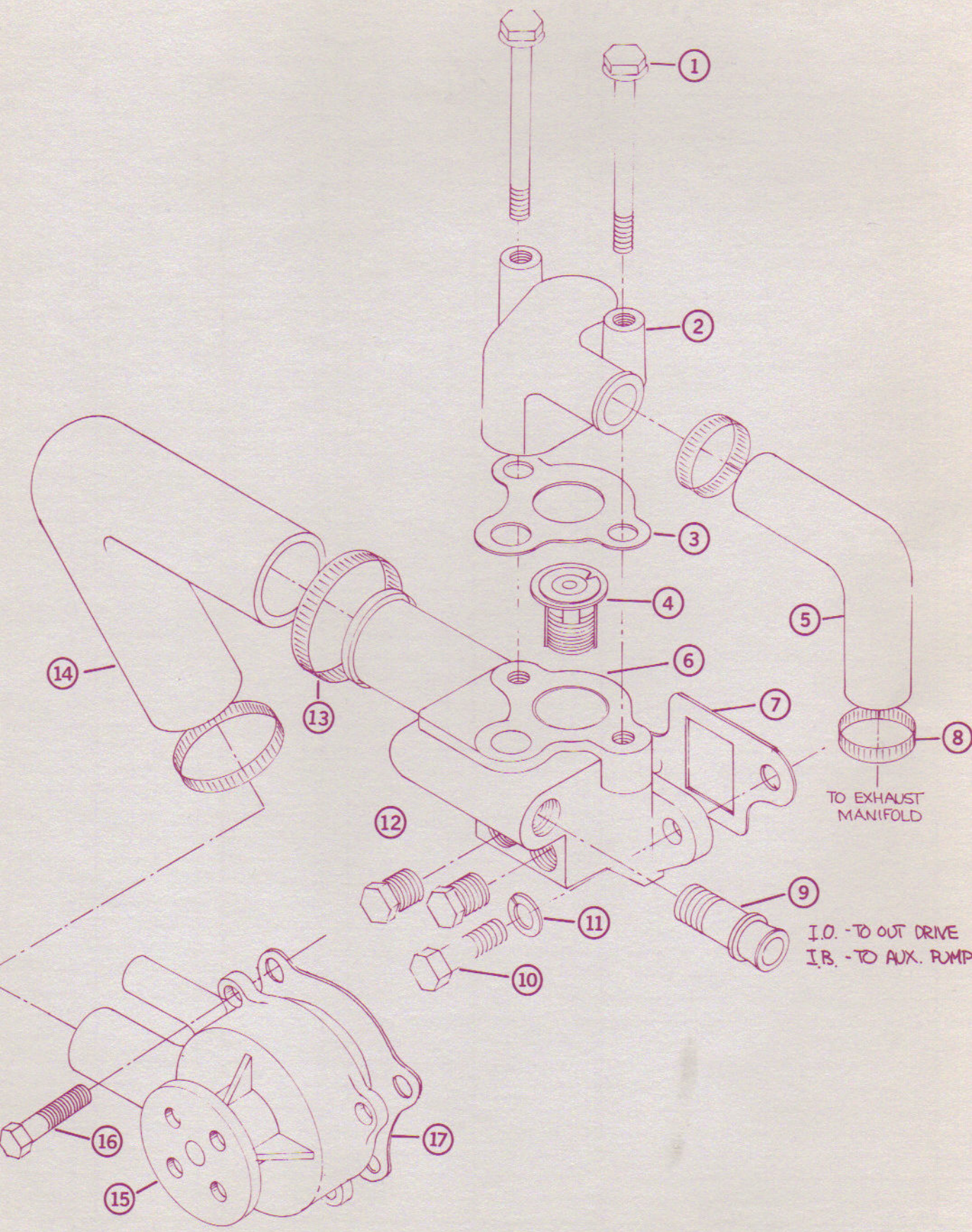
REF. NO.	DESCRIPTION	QTY	262	QTY	350	QTY	350P	QTY	454	QTY	454P
1	BODY	1	0563-004		-		-		0562-004		-
2	SHAFT	1	0563-005		-		-		-		-
3	CAM	1	0563-002		-		-		0562-003		-
3	CAM - 1/2 THICKNESS	Opt	0563-006		-		-		0562-004		-
4	END COVER	1	0563-003		-		-		-		-
5	IMPELLER	1	0563-001		-		-		0562-001		-
6	GASKET	1	0562-002		-		-		-		-
7	CARRIER	1	0563-007		-		-		-		-
8	LIPSEAL	1	0563-008		-		-		-		-
9	BALL BEARING	2	0563-009		-		-		-		-
10	O-RING	1	0563-010		-		-		-		-
11	SCREW	4	0563-011		-		-		-		-
12	SCREW	1	0563-012		-		-		-		-
12	SCREW - 1/2 CAM	Opt	0562-005		-		-		-		-
13	WASHER	1	0563-013		-		-		-		-
★	SERVICE KIT INCLUDES		0563-020		-		-		0562-020		-
	IMPELLER										
	LIPSEAL										
★	CARRIER/SHAFT ASSY INCLUDES		0563-021		-		-		-		-
	CARRIER										
	SHAFT										
	BALL BEARING - 2										
Z	PUMP ASSEM INCLUDES	1	0563-000		-		-		0562-000		-

COOLING SYSTEM AUXILIARY SEAWATER PUMP GROUP

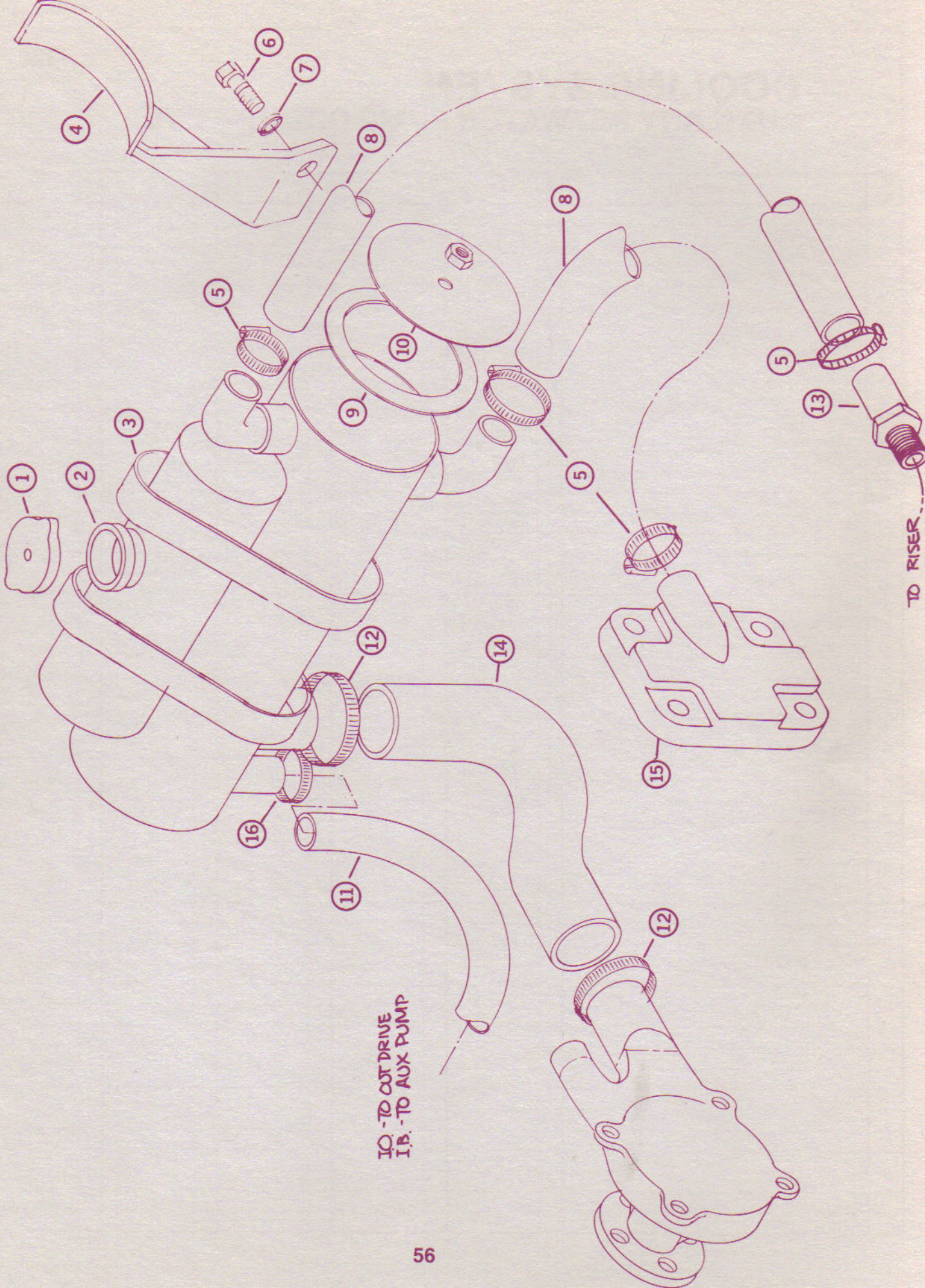


COOLING SYSTEM

RAW WATER COOLING GROUP 4 CYL



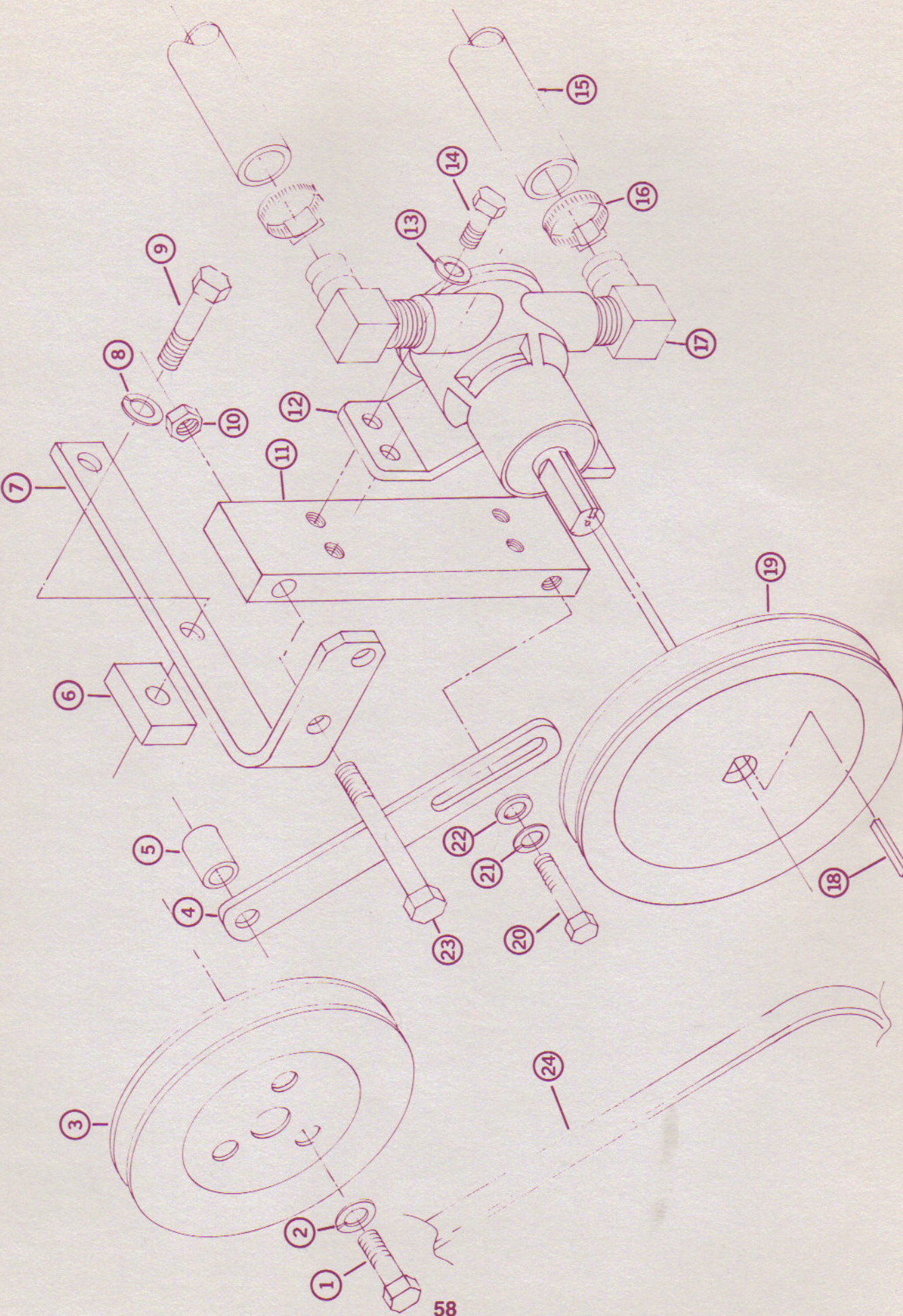
COOLING SYSTEM FRESH WATER GROUP



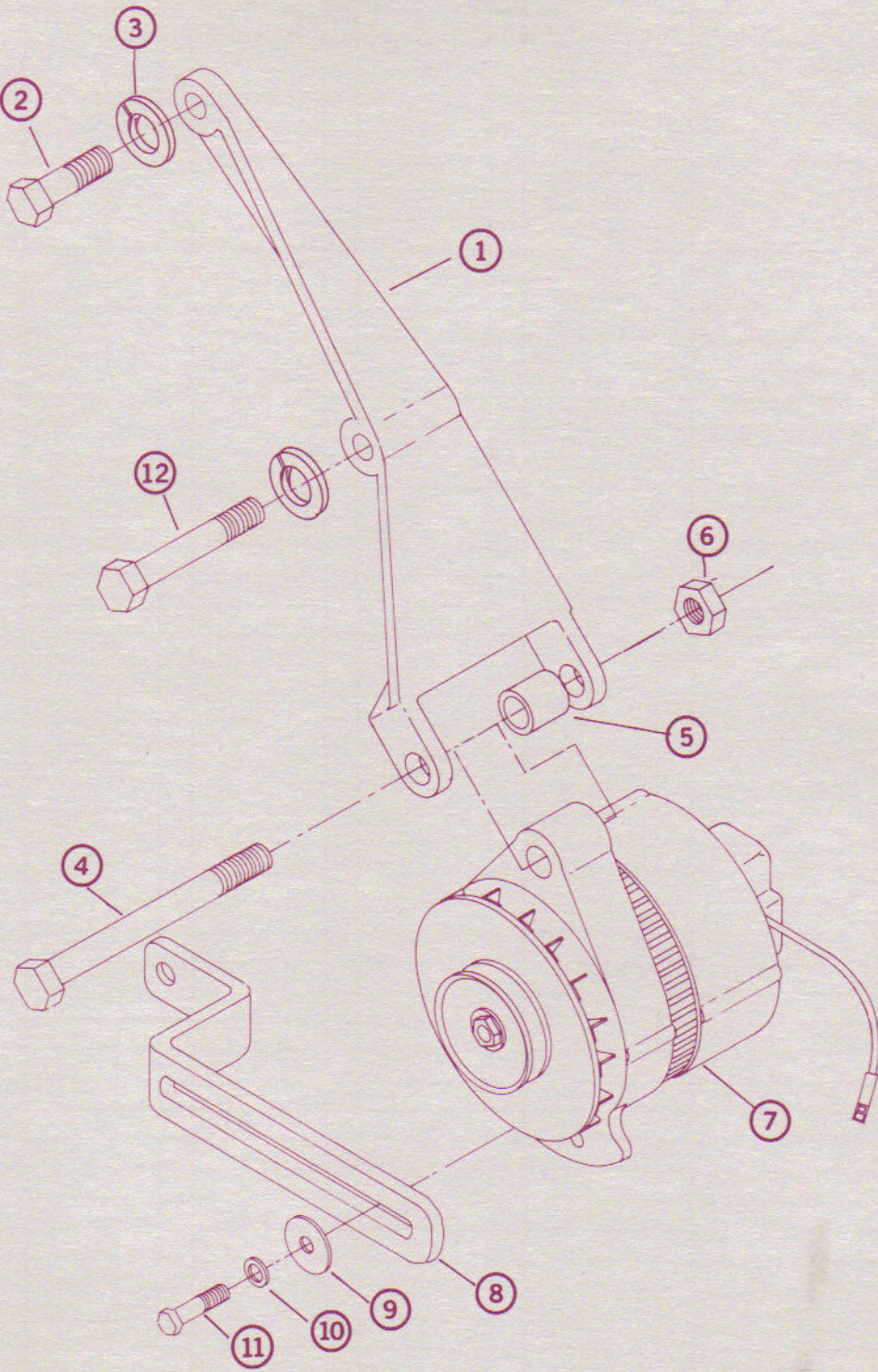
10 - TO OUT DRIVE
11 - TO AUX PUMP

TO RISER

COOLING SYSTEM AUXILIARY SEAWATER PUMP GROUP 4 CYL

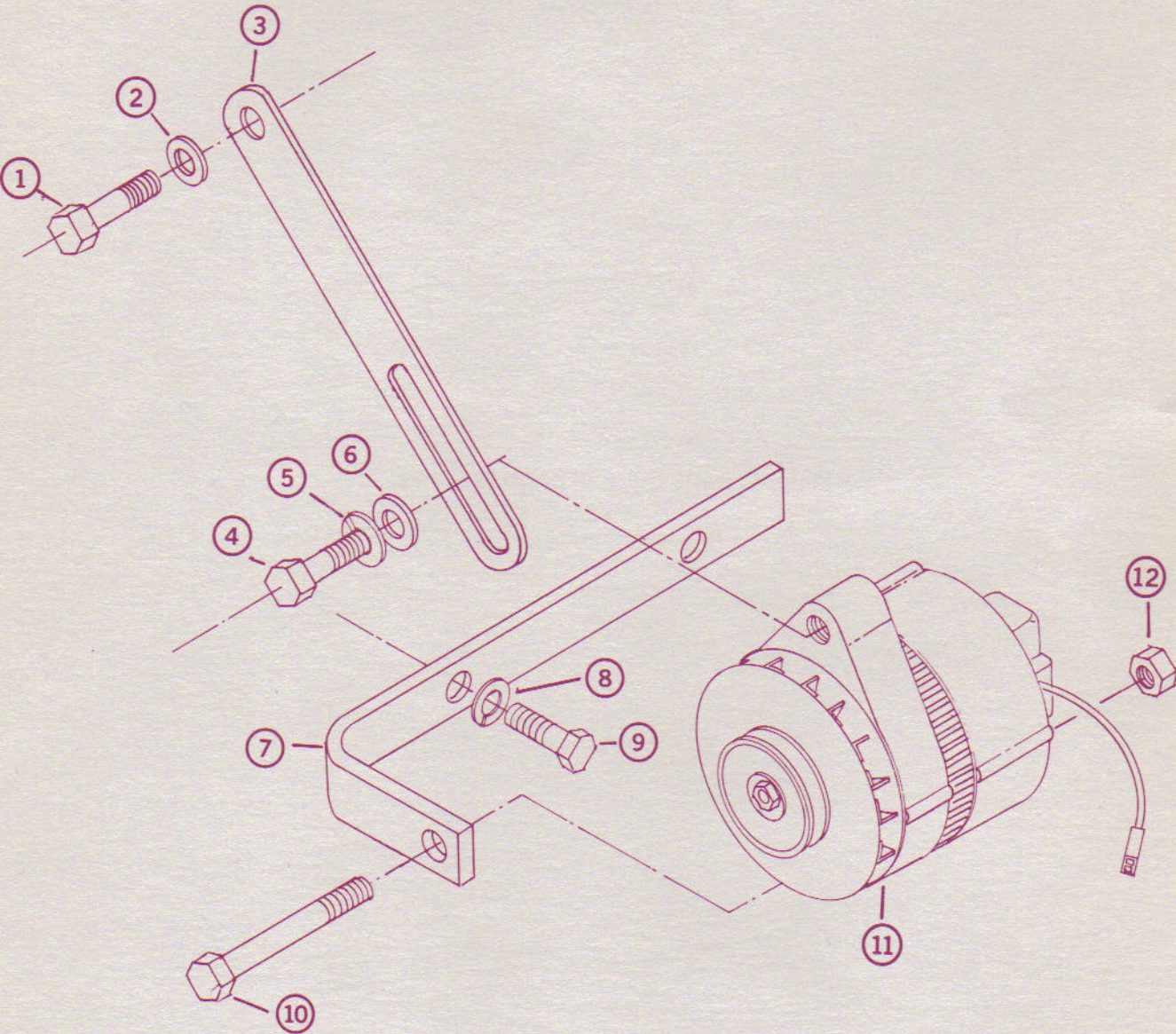


ELECTRICAL SYSTEM ALTERNATOR GROUP



ELECTRICAL SYSTEM

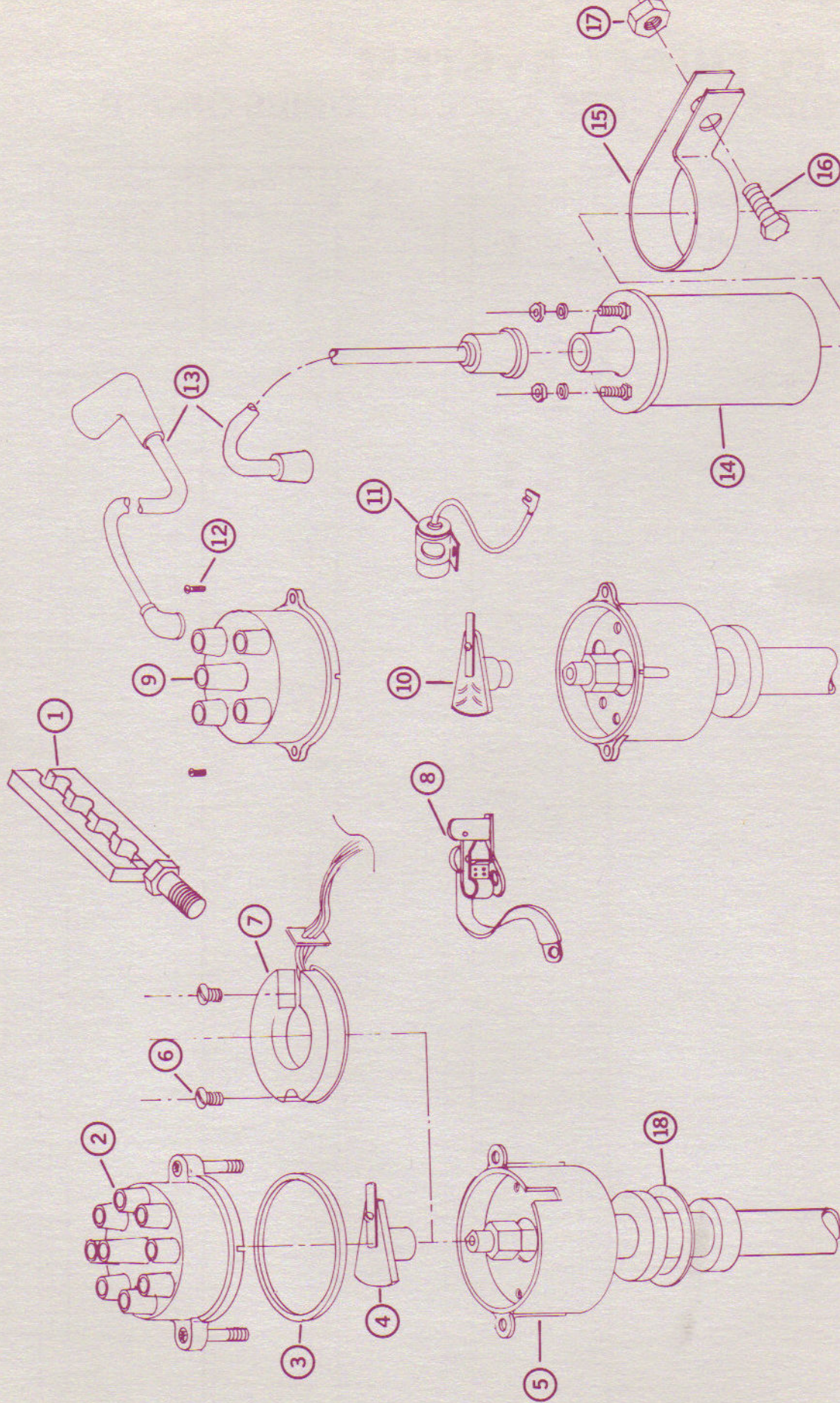
ALTERNATOR GROUP – 4 CYLINDER



ELECTRICAL SYSTEM IGNITION GROUP

REF. NO.	DESCRIPTION	QTY	181	QTY	262	QTY	350	QTY	454	QTY
1	PLUG WIRE MOUNT			2	0RPB-612		-		0RPB-712	
Z	DISTRIBUTOR - PRESTOLITE			1	0802-000		0805-000		-	
2	CAP			1	0802-001		0805-001		-	
3	GASKET			1						
4	ROTOR			1	0802-002		0805-002		-	
5	DISTRIBUTOR - BODY			1						
6	SCREW			1						
7	MODULE					1	0805-006			
Z	DISTRIBUTOR - DELCO	1	0801-000							
8	POINT SET	1	0801-003							
9	CAP	1	0801-001							
10	ROTOR	1	0801-002							
11	CONDENSER	1	0801-004							
12	SCREW - CAP	2								
13	PLUG WIRE SET	1	1112-000		1111-000		1110-000		1113-000	
14	COIL - ELECT-IGN						0805-100		-	
14	COIL - POINT TYPE	1	0801-100		-		-		-	
15	CLAMP - COIL	1	0805-105		-		-		-	
16	BOLT	1	00BS 512		-		-		-	
17	NUT	1	00NS-005							
18	GASKET	1	0314-043		0303-043		-		-	
★	CAP - MALLORY						0800-001		-	
★	ROTOR - MALLORY						0800-002		-	
★	POINTER SET - MALLORY						0800-003			
★	CONDENSER - MALLORY						0800-004		-	
★	POINT SET - PRESTOLITE				0802-003					
★	CONDENSER - PRESTOLITE				0802-004					

ELECTRICAL SYSTEM IGNITION GROUP

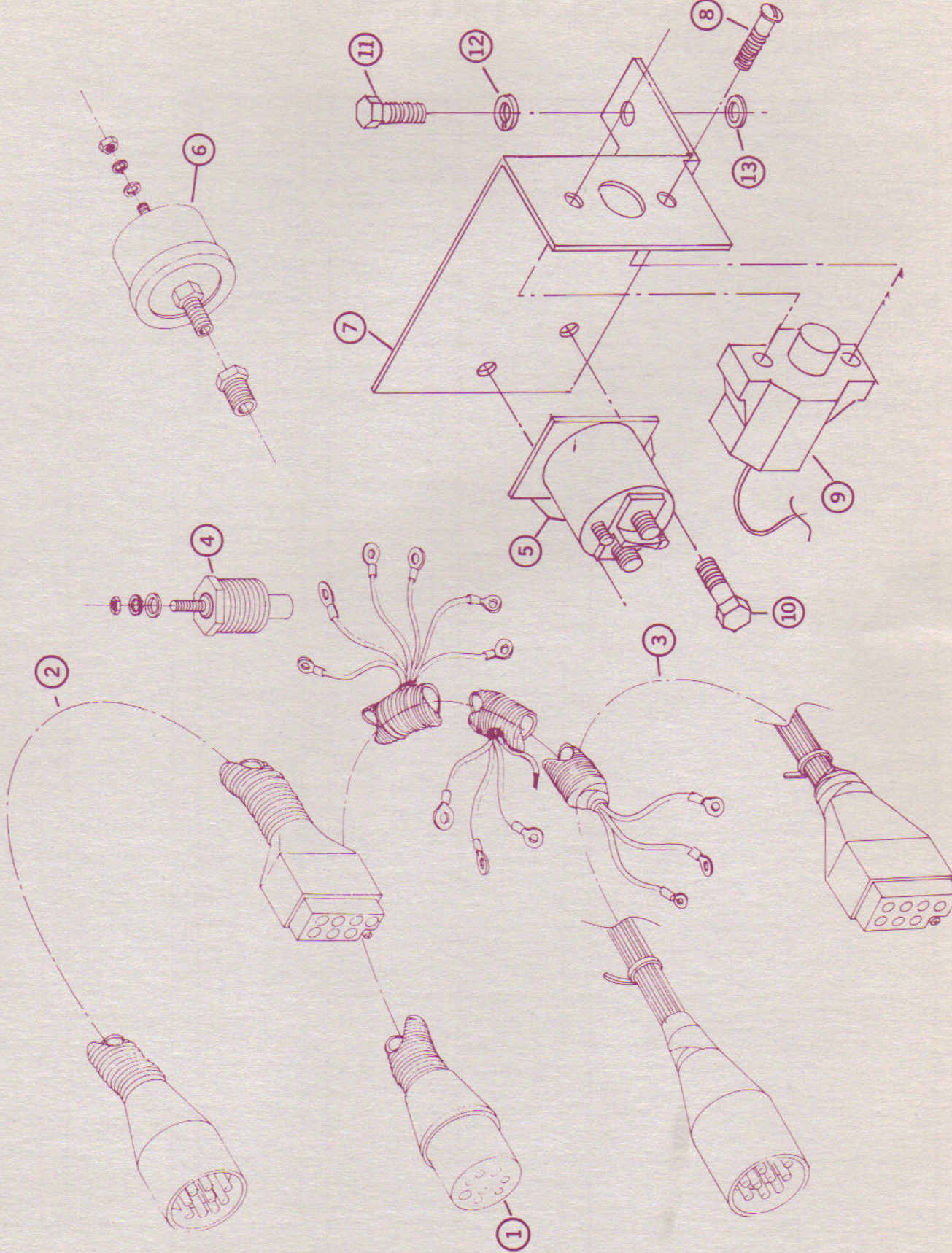


ELECTRICAL SYSTEM

ENGINE HARNESS & ACCESSORIES GROUP

REF. NO.	DESCRIPTION	QTY	GM-4	QTY	GM-6	QTY	GM-8	QTY	FORD-8	QTY
1	ENGINE HARNESS	1	1140-000	1	1140-001	1	1140-002	1	1140-003	
2	ADAPTER – ROUND TO UNIVERSAL	Opt	0947-003		–		–		–	
3	HARNESS EXTENSION – 6'	Opt	0947-006		–		–		–	
3	HARNESS EXTENSION – 8'	Opt	0947-008		–		–		–	
3	HARNESS EXTENSION – 10'	Opt	0947-010		–		–		–	
3	HARNESS EXTENSION – 12'	Opt	0947-012		–		–		–	
3	HARNESS EXTENSION – 16'	Opt	0947-016		–		–		–	
3	HARNESS EXTENSION – 20'	Opt	0947-020		–		–		–	
3	HARNESS EXTENSION – 25'	Opt	0947-025		–		–		–	
3	HARNESS EXTENSION – 30'	Opt	0947-030		–		–		–	
3	HARNESS EXTENSION – 35'	Opt	0947-035		–		–		–	
3	HARNESS EXTENSION – 40'	Opt	0947-040		–		–		–	
4	SENDER – WATER TEMP	1	0940-001		–		–		–	
4	SENDER – WATER TEMP – DUAL STATION	Opt	0940-101		–		–		–	
5	RELAY	1	1140-006		–		–		–	
6	SENDER – OIL PRES	1	0940-002		–		–		–	
6	SENDER – OIL PRES – DUAL STATION	Opt	0940-102		–		–		–	
7	BRACKET – ELECTRICAL	1	1150-000		–		–		–	
8	SCREW	2	0S10-3212		–		–		–	
9	CIRCUIT BREAKER	1	1140-004		–		–		–	
10	SCREW	2	0S10-2408		–		–		–	
11	BOLT	2	00BS-512		–		–		–	
12	LOCKNUT	2	0NLS-1024		–		–		–	
13	O-RING	2	000R-005		–		–		–	
★	CLAMP – HARNESS	2	0792-000		–		–		–	
Z	SENDER GROUP		0940-000							
Z	SENDER GROUP – DUAL STATION		0940-100							

ELECTRICAL SYSTEM ENGINE HARNESS & ACCESSORIES GROUP



ELECTRICAL SYSTEM IGNITION & PANEL GROUP

